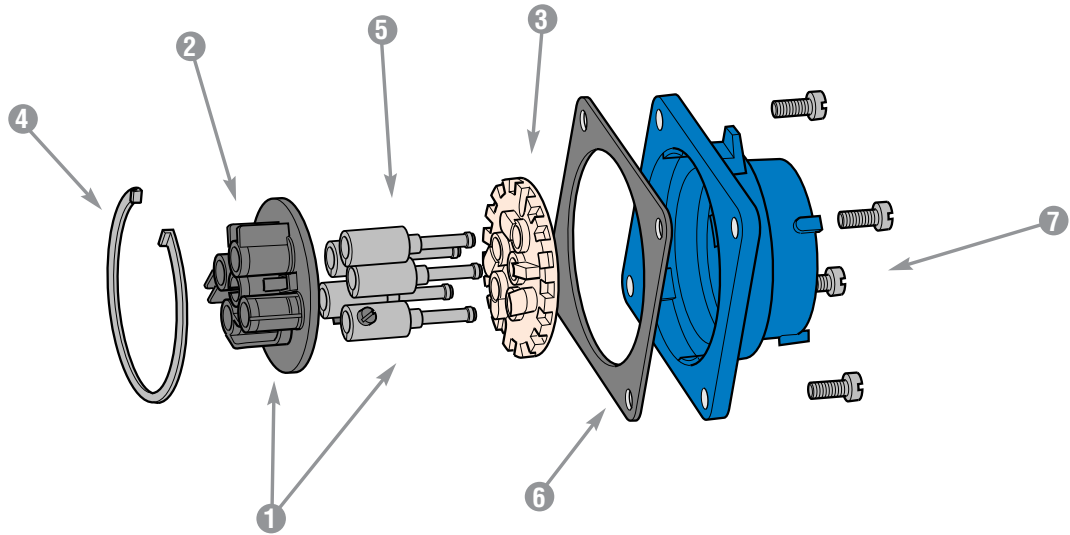




Spare Parts Male Configuration

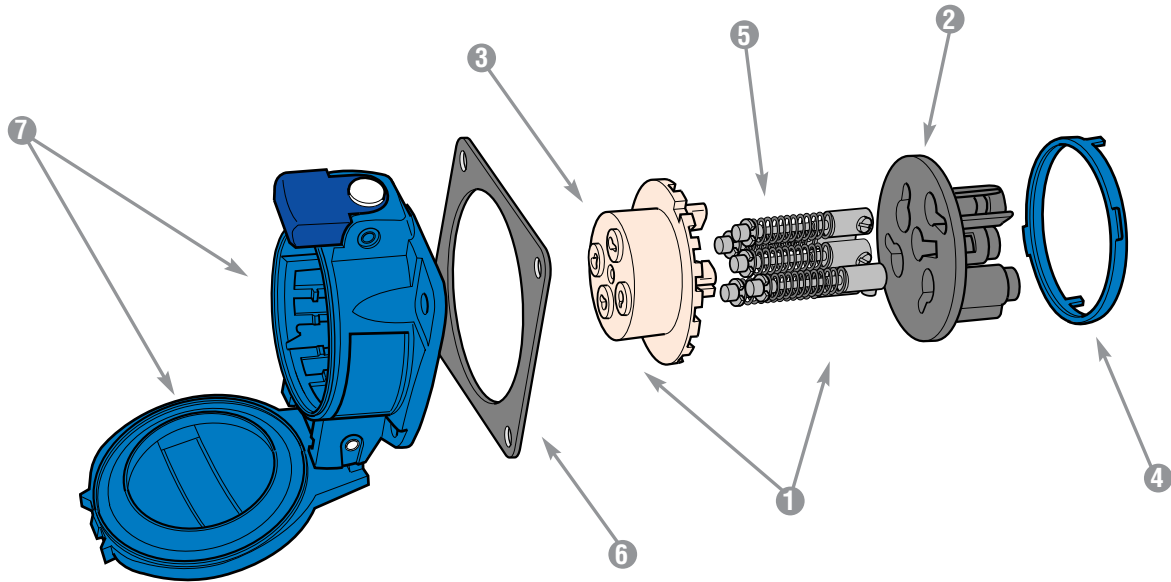






	PN20A POLY	PN20A METAL	PN20A HT METAL	PN30A HT METAL	
1 = Plug Interior	01-2A010*	01-2A010*	01-2A010-185*	01-2A010-185*	
2 = Interior Bottom	01-2A010-B	01-2A010-B	01-2A010-185-B	01-2A010-185-B	
3 = Interior Top	01-2A010-T*	01-2A010-T*	01-2A010-185-T*	01-2A010-185-T*	
4 = Locking Ring	01-NA583	09-2A583	09-2A583-185	09-2A583-185	
5 = Plug Contact	01-2A011	01-2A011	01-2A011-185	01-2A011-185	
6 = Device Gasket	<div style="display: flex; align-items: center;"> <div style="width: 20px; height: 10px; background-color: #0056b3; border-radius: 5px; margin-right: 5px;"></div> 208V </div> <div style="display: flex; align-items: center;"> <div style="width: 20px; height: 10px; background-color: #ff9900; border-radius: 5px; margin-right: 5px;"></div> 250V </div> <div style="display: flex; align-items: center;"> <div style="width: 20px; height: 10px; background-color: #cc0000; border-radius: 5px; margin-right: 5px;"></div> 480V </div> <div style="display: flex; align-items: center;"> <div style="width: 20px; height: 10px; background-color: #ff9900; border-radius: 5px; margin-right: 5px;"></div> 125V </div>	61-1AB26	61-1AB26	-	-
		61-1AC26	-	-	
		61-1AR26	-	-	
		61-1AC26	-	-	
7 = Plug Casing	01-NA014**	09-NA014**	09-2A014-185**	09-2A014-185**	

* Voltage and phasing positions must be specified (5th, 6th & 7th digit of Part #) to duplicate your shutter and alignment notches.

** For appropriate labeling on a device, please specify voltage, phasing, and product type

Spare Parts Female Configuration



	PN20A POLY	PN20A METAL	PN20A HT METAL	PN30A HT METAL
① = Receptacle Interior	01-2A020*	01-2A020*	01-2A020-185*	01-2A020-185*
② = Interior Bottom	01-2A020-B	01-2A020-B	01-2A020-185-B	01-2A020-185-B
③ = Interior Top	01-2A020-T*	01-2A020-T*	01-2A020-185-T*	01-2A020-185-T*
④ = Locking Ring	01-NA583	09-2A583	09-2A583-185	09-2A583-185
⑤ = Receptacle Contact	01-2A021	01-2A021	01-2A021-185	01-2A021-185
⑥ = Device Gasket	 61-1AB26	61-1AB26	-	-
	 61-1AC26	61-1AC26	-	-
	 61-1AR26	61-1AR26	-	-
	 61-1AC26	61-1AC26	-	-
⑦ = Receptacle Casing with Lid IP54/55	01-SA024**	09-SA024**	09-2A024-185**	09-2A024-185**
⑦ = Receptacle Casing with Lid IP66 + 67	01-NA024**	09-NA024**	-	-

* Voltage and phasing positions must be specified (5th, 6th & 7th digit of Part #) to duplicate your shutter and alignment notches.

** For appropriate labeling on a device, please specify voltage, phasing, and product type

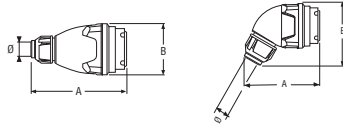


Dimensions

Inlet – Provided in inches and millimeters

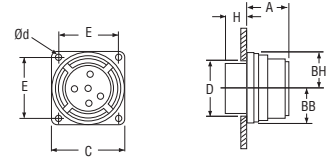
Dimensions are for reference only

Plug



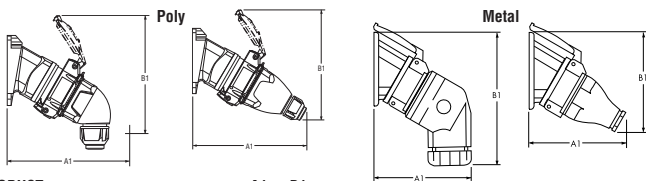
PRODUCT	A	B	Ø
	3.94	2.91	.32-.67
PN/PN7/PN12 angled	100	74	8-17
	4.65	2.28	.32-.59
PN/PN7/PN12 straight	118	58	8-15

Inlet



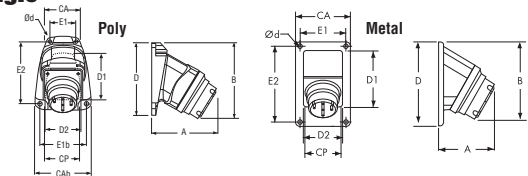
PRODUCT	A	BB	BH	C	D	E	H	Ød
	1.06	1.12	0.98	2.20	1.69	1.65	0.47	0.17
PN/PN7/PN12	27	28.5	28	56	43	41.9	12	4.4

30° inclined inlet/angle with connector



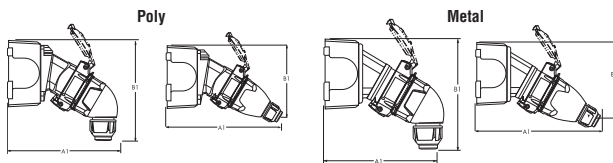
PRODUCT	A1	B1
	4.13	5.75
PN/PN7/PN12 angled poly	105	146
	5.67	4.92
PN/PN7/PN12 straight poly	144	125
	5.43	6.57
PN/PN7/PN12 angled metal	138	167
	4.84	5.43
PN/PN7/PN12 straight metal	123	138

30° inlet/angle



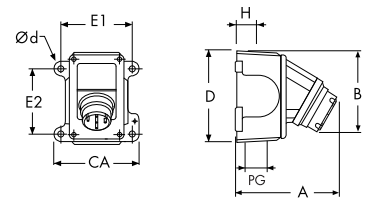
PRODUCT	A	B	CA	CAb	CP	D	D1	D2	E1	E1b	E2	Ød
	2.83	3.43	1.77	2.68	2.24	3.54	2.95	1.97	1.42	2.20	3.07	0.18
PN/PN7/PN12 poly	72	87	45	68	57	90	75	50	36	56	78	4.5
	2.56	4.17	2.99	2.99	1.97	4.21	3.74	2.56	2.48	2.48	3.74	0.24
PN/PN7/PN12 metal	65	106	76	76	50	107	95	65	63	63	95	6

30° inclined inlet/angle/junction box with connector



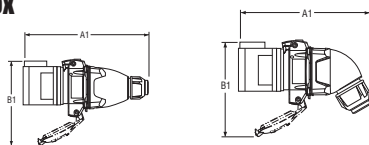
PRODUCT	A1	B1
	7.52	6.30
PN/PN7/PN12 angled poly	191	160
	6.73	5.67
PN/PN7/PN12 straight poly	171	144
	7.91	6.69
PN/PN7/PN12 angled metal	201	170
	7.32	5.55
PN/PN7/PN12 straight metal	186	141

inlet/angle/metal junction box



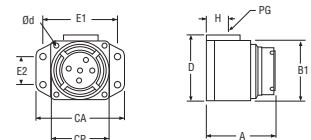
PRODUCT	A	B	CA	D	E1	E2	H	PG	Ød
	4.53	4.06	4.40	4.57	3.75	2.78	1.18	1.00	0.25
PN/PN7/PN12 poly	115	103	111.8	116	95.3	70.6	30	6.4	
	5.04	4.29	4.40	4.57	3.75	2.78	1.18	1.00	0.25
PN/PN7/PN12 metal	128	109	111.8	116	95.3	70.6	30	6.4	

inlet/straight wall box with connector



PRODUCT	A1	B1
	6.34	3.58
PN/PN7/PN12 angled	161	91
	6.02	2.76
PN/PN7/PN12 straight	153	70

inlet/straight wall box



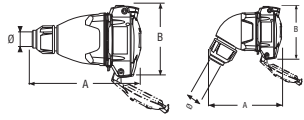
PRODUCT	A	B	CA	CP	D	E1	E2	H	PG	Ød
	2.60	2.17	3.07	2.17	2.40	2.52	0.94	0.69	0.50	0.22
PN/PN7/PN12	66	55	78	55	61	64	24	17.5		5.5

Dimensions

Receptacle – Provided in inches and millimeters

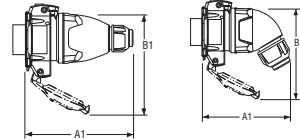
Dimensions are for reference only

connector



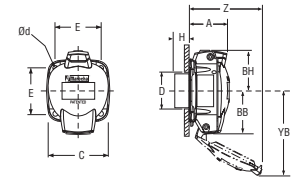
PRODUCT	A	B	Ø
	3.82	3.03	.32-.67
PN/PN7/PN12 angled	97	77	8-17
	4.53	2.99	.32-.59
PN/PN7/PN12 straight	115	76	8-15

receptacle with plug



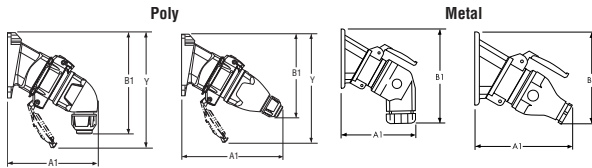
PRODUCT	A1	B1
	4.61	2.99
PN/PN7/PN12 angled	117	76
	4.72	2.99
PN/PN7/PN12 straight	120	76

receptacle



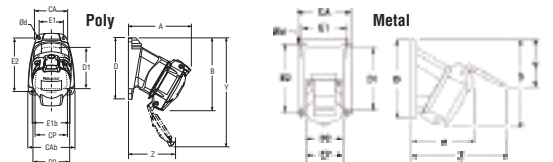
PRODUCT	A	BB	BH	C	D	E	H	YB	Z	Ød
	1.46	1.52	1.41	2.20	1.68	1.65	0.63	3.66	2.66	0.17
PN/PN7/PN12	37	38.5	35.7	56	42.7	42	16	93	67.5	4.4

30° inclined receptacle/angle with plug



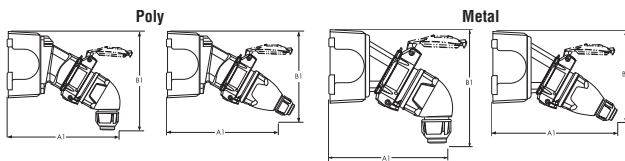
PRODUCT	A1	B1
	4.96	5.59
PN/PN7/PN12 angled poly	126	142
	4.13	5.55
PN/PN7/PN12 straight poly	105	141
	5.43	6.57
PN/PN7/PN12 angled metal	138	167
	4.84	5.43
PN/PN7/PN12 straight metal	123	138

30° receptacle/angle



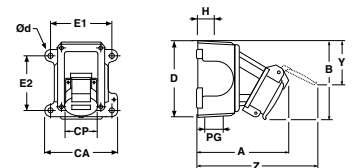
PRODUCT	A	B	CA	CAb	CP	D	D1	D2	E1	E1b	E2	Y	Z	Ød
	3.5	3.97	1.77	2.68	2.24	3.54	2.95	1.97	1.42	2.20	3.07	6.30	1.57	0.18
PN/PN7/PN12 poly	89	101	45	68	57	90	75	50	36	56	78	160	40	4.5
	3.15	4.72	2.99	2.99	2.05	4.21	3.74	2.56	2.48	2.48	3.74	6.38	2.52	0.24
PN/PN7/PN12 metal	80	120	76	76	52	107	95	65	63	63	95	162	64	6

30° inclined receptacle/angle/junction box with plug



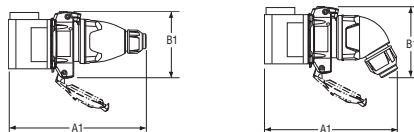
PRODUCT	A1	B1
	7.13	6.30
PN/PN7/PN12 angled poly	181	160
	6.93	5.16
PN/PN7/PN12 straight poly	176	131
	7.91	6.69
PN angled metal	201	170
	7.32	5.55
PN/PN7/PN12 straight metal	186	141

receptacle/angle/metal junction box



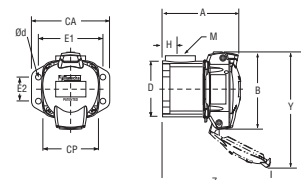
PRODUCT	A	B	CA	CP	D	E1	E2	H	PG	Y	Z	Ød
	5.24	4.45	4.40	2.24	4.57	3.75	2.78	1.18	1.00	6.10	4.61	0.25
PN/PN7/PN12 poly	133	113	111.8	57	116	95.3	70.6	30	155	117	6.4	
	5.63	4.84	4.40	2.05	4.57	3.75	2.78	1.18	1.00	6.50	5.00	0.25
PN/PN7/PN12 metal	143	123	111.8	52	116	95.3	70.6	30	165	127	6.4	

receptacle/straight wall box with plug



PRODUCT	A1	B1
	5.35	3.11
PN/PN7/PN12 angled	136	79
	6.38	3.01
PN/PN7/PN12 straight	162	76.5

receptacle/straight wall box



PRODUCT	A	B	CA	CP	D	E1	E2	H	PG	Y	Z	Ød
	2.97	3.00	3.07	2.17	2.39	2.52	0.94	0.69	0.50	5.04	4.49	0.22
PN/PN7/PN12	75.5	76.4	78	55	60.6	64	24	17.5	128	114	5.5	