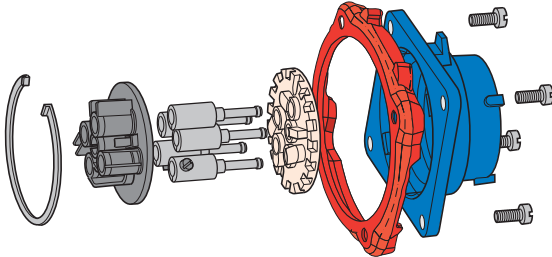


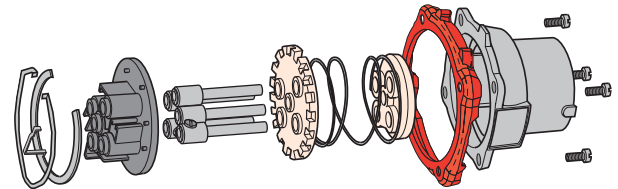


# Spare Parts Male Configuration

PN pictured



DN pictured



PN7	POLY	METAL
Plug Interior, Ground Contact & Connection	09-PA910	09-PA910
Plug Contact	09-PA911	09-PA911
Device Gasket	61-1AM26	61-1AM26
Plug Casing	01-NA014	09-NA014
Ground Contact	09-PA919	09-PA919

PN12	POLY	METAL
Plug Interior, Ground Contact & Connection	09-MA910	09-MA910
Plug Contact	01-MA911	01-MA911
Device Gasket	61-1AM26	61-1AM26
Plug Casing	01-NA014	09-NA014
Ground Contact	09-MA919	09-MA919

DSN24/37	24 POLY	37 POLY
Plug Interior	31-1A910	31-3A910
Plug Contact	31-1A911	31-1A911
Plug Casing	61-3A014	61-6A014
Device Gasket	61-3AM26	31-3AM26

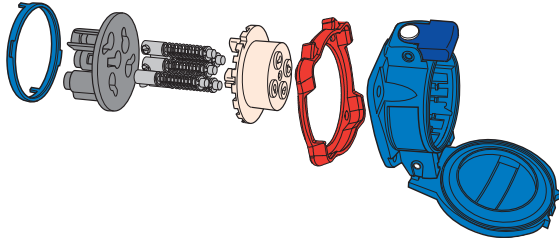
DN9/20	9 METAL	20 METAL
Plug Interior	19-1A910	19-6A910
Plug Contact (Short/Outside)	19-1A911	19-6A911
Plug Contact (Long/Inside)	19-1A711	19-6A711
Plug Casing	19-1A014	19-6A014
Device Gasket	31-3A026	31-9A026

DS7/DR7	POLY	METAL
Plug Casing	31-6A014	39-6A014
Plug Phase Contact	31-3A911	31-3A911
Plug Pilot Contact	31-3A911-172	31-3A911-172
Plug Interior	31-3A910-263	31-3A910-263
Device Gasket	31-6AM26	31-6AM26
Ground Contact	31-3A919	31-3A919

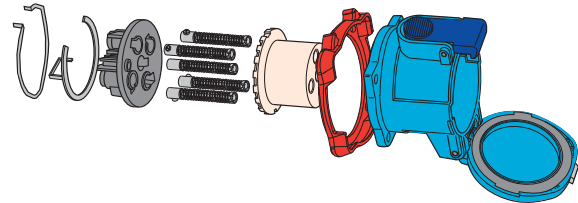
DN7	50 METAL	90 METAL	150 METAL
Plug Casing	19-3A014	19-6A014	39-2A014
Plug Phase Contact	19-3A011-777	19-6A011-777	19-9A011-777
Plug Ground Contact	19-3A019-777	19-6A019-777	19-9A019-777
Plug Interior	19-3A010-777	19-6A010-777	19-9A010-777
Device Gasket	31-6A026	31-9A026	39-2A026

# Spare Parts Female Configuration

PN pictured



DN pictured



PN7	POLY	METAL
Receptacle Interior, Ground Contact & Connection	09-PA920	09-PA920
Receptacle Contact	09-PA921	09-PA921
Device Gasket	61-1AM26	61-1AM26
Receptacle Casing	01-NA024	09-NA024
Ground Contact	09-PA929	09-PA929

PN12	POLY	METAL
Receptacle Interior, Ground Contact & Connection	09-MA920	09-MA920
Receptacle Contact	01-MA921	01-MA921
Device Gasket	61-1AM26	61-1AM26
Receptacle Casing	01-NA024	09-NA024
Ground Contact	09-MA929	09-MA929

DSN24/37	24 POLY	37 POLY
Receptacle Interior	31-1A920	31-3A920
Receptacle Contact	31-1A921	31-1A921
Receptacle Casing	61-3A024	61-6A024
Device Gasket	61-3AM26	31-3AM26

DN9/20	9 METAL	20 METAL
Receptacle Interior	19-1A920	19-6A920
Receptacle Contact (Short/Outside)	19-1A921	19-6A921
Receptacle Contact (Long/Inside)	19-1A721	19-6A721
Receptacle Casing	19-1A024	19-6A024
Lid, Gasket, Roll Pin & Spring	19-1A925	19-6A925
Device Gasket	31-3A026	31-9A026

DS7/DR7	POLY	METAL
Receptacle Casing	31-6A024	39-6A024
Receptacle Phase Contact	31-3A921	31-3A921
Receptacle Pilot Contact	31-3A921-172	31-3A921-172
Receptacle Interior	31-3A920-263	31-3A920-263
Device Gasket	31-6AM26	31-6AM26
Ground Contact	31-3A929	31-3A929

DN7	50 METAL	90 METAL	150 METAL
Receptacle Casing	19-3A024	19-6A024	39-2A024-777
Receptacle Phase Contact	19-3A021-777	19-6A021-777	19-9A021-777
Receptacle Ground Contact	19-3A029-777	19-6A029-777	19-9A029-777
Receptacle Interior	19-3A020-777	19-6A020-777	19-9A020-777
Device Gasket	31-6A026	31-9A026	39-2A026

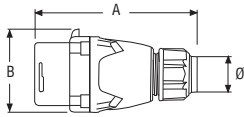


# Dimensions

## Inlet – Provided in inches and millimeters

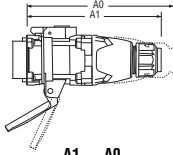
Dimensions are for reference only

### Plug



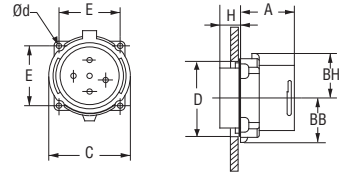
PRODUCT	A	B	Ø
	10.24	5.55	1.50-2.25
DN7(150A)	260	141	40-58
DN9	5.79	3.39	.32-1.25
	147	86	8-32
DN7(50A)	7.68	3.98	.55-1.53
	195	101	14-39
DN7(90A)/DN20	8.46	4.76	1.00-1.75
	215	121	25-45

### Inlet with connector on/off



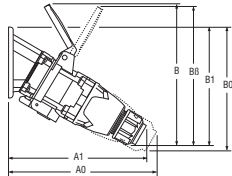
PRODUCT	A1	A0
	12.20	13.43
DN7(150A)	310	341
DN9	6.85	7.60
	174	193
DN7(50A)	8.35	9.53
	212	242
DN7(90A)/DN20	10.67	9.41
	271	239

### Inlet



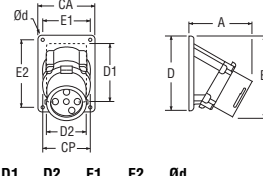
PRODUCT	A	BB	BH	C	D	E	H	Ød
	3.11	2.87	2.68	5.12	4.65	3.86	1.57	0.26
DN7(150A)	79	73	68	130	118	98	40	6.5
DN9	2.01	1.77	1.61	3.03	2.76	2.17	0.59	0.20
	51	45	41	77	70	55.1	15	5
DN7(50A)	3.03	2.09	1.89	3.58	3.15	2.59	0.87	0.23
	77	53	48	91	80	65.8	22	5.8
DN7(90A)/DN20	3.50	2.52	2.22	4.33	3.94	3.20	0.98	0.23
	89	64	56.5	110	100	81.3	25	5.8

### 30° inclined inlet/angle with connector on/off



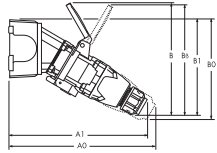
PRODUCT	A1	A0	B	B1	B0
	11.50	12.13	16.81	13.66	14.72
DN7(150A) 60°	292	308	427	347	374
DN9	8.03	8.66	8.23	7.01	7.36
	204	220	209	178	187
DN7(50A)	9.53	10.51	9.21	8.66	9.25
	242	267	234	220	235
DN7(90A)/DN20	12.72	11.65	11.22	10.04	9.41
	323	296	285	255	239

### 30° inlet/angle



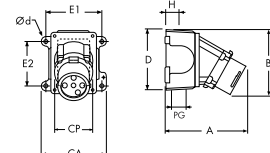
PRODUCT	A	B	CA	CP	D	D1	D2	E1	E2	Ød
	6.93	8.90	7.20	5.12	7.20	5.91	5.91	6.50	6.50	0.28
DN7(150A) 60°	176	226	183	130	183	150	150	165	165	7
DN9	3.86	4.65	2.99	3.03	4.21	2.56	3.74	2.48	3.74	0.22
	98	118	76	77	107	65	95	63	95	5.5
DN7(50A)	5.00	6.14	4.02	3.58	5.35	4.37	3.54	3.44	4.80	0.26
	127	156	102	91	136	111	90	87.3	122	6.5
DN7(90A)/DN20	6.57	6.54	5.51	4.33	5.59	4.33	3.94	4.87	4.87	0.28
	167	166	140	110	142	110	100	123.8	123.8	7

### 30° inclined inlet/angle/junction box with connector on/off



PRODUCT	A1	A0	B	B1	B0
	15.67	16.30	16.81	13.66	14.72
DN7(150A) 60°	398	414	427	347	374
DN9	10.51	11.14	8.23	7.13	7.48
	267	283	209	181	190
DN7(50A)	12.60	13.58	9.21	8.86	9.45
	320	345	234	225	240
DN7(90A)/DN20	16.34	15.28	11.22	10.04	9.41
	415	388	285	255	239

### inlet/angle/metal junction box



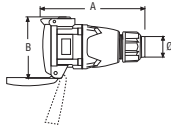
PRODUCT	A	B	CA	CP	D	E1	E2	H	PG	Ød
	11.10	8.90	8.94	5.12	7.32	8.25	6.38	2.05	2.50	0.33
DN7(150A) 60°	282	226	227	130	186	209.6	162	52		8.4
DN9	6.34	4.40	4.25	3.03	4.57	3.75	2.78	1.18	1.00	0.25
	161	111.8	108	77	116	95.3	70.6	30		6.4
DN7(50A)	8.07	5.75	5.59	3.58	5.81	5.00	3.82	1.57	1.50	0.30
	205	146	142	91	147.5	127	97	40		7.5
DN7(90A)/DN20	10.20	7.54	7.44	4.33	5.65	6.62	4.24	1.93	2.00	0.31
	259	191.5	189	110	143.5	168.1	107.7	49		7.8

# Dimensions

## Receptacle – Provided in inches and millimeters

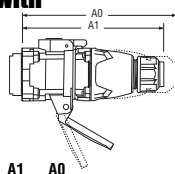
Dimensions are for reference only

### connector



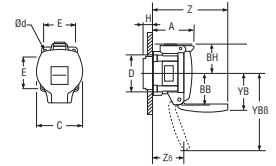
PRODUCT	A	B	Ø
	11.46	6.57	1.50-2.25
DN7(150A)	291	167	40-58
	6.65	3.86	.32-1.25
DN9	169	98	8-32
	7.87	4.53	.55-1.53
DN7(50A)	200	115	14-39
	8.82	5.20	1.00-1.75
DN7(90A)/DN20	224	132	25-45

### receptacle with plug on/off



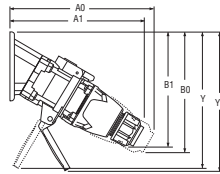
PRODUCT	A1	A0
	12.20	13.43
DN7(150A)	310	341
	6.85	7.60
DN9	174	193
	8.35	9.53
DN7(50A)	212	242
	10.67	9.41
DN7(90A)/DN20	271	239

### receptacle



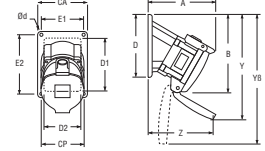
PRODUCT	A	BB	BH	C	D	E	H	YB	Z	Ød
	4.31	2.95	3.62	5.16	4.65	3.86	1.50	4.53	8.38	0.26
DN7(150A)	109.5	75	92	131	118	98	38	115	212.9	6.5
	2.88	1.93	1.93	2.91	2.76	2.17	0.59	3.39	4.93	0.20
DN9	73.1	49	49	74	70	55.1	15	86	125.3	5
	3.82	2.28	2.24	3.50	3.15	2.59	0.87	3.74	5.69	0.23
DN7(50A)	97	58	57	89	80	65.8	22	95	144.6	5.8
	4.34	2.64	2.56	4.41	3.94	3.20	0.94	4.25	7.68	0.23
DN7(90A)/DN20	110.3	67	65	112	100	81.3	24	108	195.1	5.8

### 30° inclined receptacle/angle with plug on/off



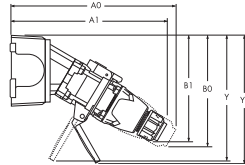
PRODUCT	A1	A0	B1	B0	Y
	11.50	12.13	13.66	14.72	11.54
DN7(150A) 60°	292	308	347	374	293
	4.09	8.66	7.01	7.36	8.03
DN9	104	220	178	187	204
	9.53	10.51	8.66	9.25	9.49
DN7(50A)	242	267	220	235	241
	12.72	11.65	10.04	9.41	10.75
DN7(90A)/DN20	323	296	255	239	273

### 30° receptacle/angle



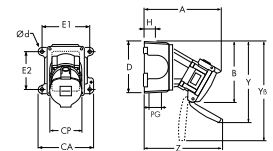
PRODUCT	A	B	CA	CP	D	D1	D2	E1	E2	Y	Z	Ød
	8.78	9.80	7.20	5.16	7.20	5.91	5.91	6.50	6.50	14.96	3.78	0.28
DN7(150A) 60°	223	249	183	131	183	150	150	165	165	380	96	7
	5.00	6.77	2.99	2.91	4.21	2.56	3.74	2.48	3.74	8.03	4.13	0.22
DN9	127	172	76	74	107	65	95	63	95	204	105	5.5
	6.06	8.23	4.02	3.50	5.35	4.37	3.54	3.44	4.80	9.49	4.72	0.26
DN7(50A)	154	209	102	89	136	111	90	87.3	122	241	120	6.5
	7.68	9.33	5.51	4.41	5.59	4.33	3.94	4.87	4.87	10.75	7.17	0.28
DN7(90A)/DN20	195	237	140	112	142	110	100	123.8	123.8	273	182	7

### 30° inclined receptacle/angle/ junction box with plug on/off



PRODUCT	A1	A0	B1	B0	Y
	15.67	16.30	13.66	14.72	11.54
DN7(150A) 60°	398	414	347	374	293
	6.57	11.14	7.13	7.48	8.15
DN9	167	283	181	190	207
	12.60	13.58	8.86	9.45	9.69
DN7(50A)	320	345	225	240	246
	16.34	15.28	10.04	9.41	10.75
DN7(90A)/DN20	415	388	255	239	273

### receptacle/angle/ metal junction box



PRODUCT	A	B	CA	CP	D	E1	E2	H	PG	Y	Z	Ød
	12.95	9.80	8.94	5.16	7.32	8.25	6.38	2.05	2.50	14.96	11.89	0.33
DN7(150A) 60°	329	249	227	131	186	209.6	162	52		380	302	8.4
	7.48	6.89	4.40	2.91	4.57	3.75	2.78	1.18	1.00	8.15	6.61	0.25
DN9	190	175	111.8	74	116	95.3	70.6	30		207	168	6.4
	9.13	8.43	5.75	3.50	5.81	5.00	3.82	1.57	1.50	9.69	7.80	0.30
DN7(50A)	232	214	146	89	147.5	127	97	40		246	198	7.5
	11.31	9.33	7.54	4.41	5.65	6.62	4.24	1.93	2.00	10.75	10.79	0.31
DN7(90A)/DN20	287	237	191.5	112	143.5	168.1	107.7	49		273	274	7.8