

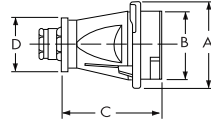


# Dimensions

## Inlet – Provided in inches and millimeters

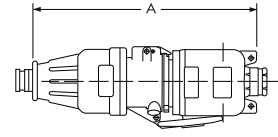
*Dimensions are for reference only*

### plug



PRODUCT	A	B	C	D
	4.06	3.19	4.65	2.68
DX20/DX30	103	81	118	68
	5.75	4.65	8.66	3.94
DX60/DX100	146	118	220	100

### Inlet + Connector



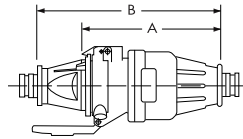
PRODUCT	A
	15.94
DX20/DX30	405
	24.88
DX60/DX100	632

# Dimensions

## Receptacle – Provided in inches and millimeters

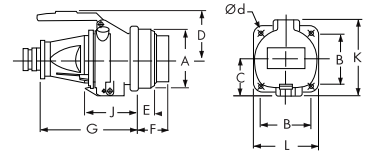
Dimensions are for reference only

### connector + plug



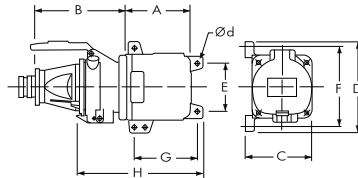
PRODUCT	A	B
	9.65	12.68
DX20/DX30	245	322
	16.06	21.14
DX60/DX100	408	537

### receptacle + plug



PRODUCT	A	B	C	D	E	F	G	J	K	L	Ød
	4.09	3.62	2.60	3.35	1.14	2.17	6.77	3.74	5.39	4.61	0.26
DX20/DX30	104	92	66	85	29	55	172	95	137	117	6.7
	5.83	4.80	3.62	4.33	1.06	3.54	11.89	6.81	7.28	6.30	0.35
DX60/DX100	148	122	92	110	27	90	302	173	185	160	9

### receptacle / box + plug



PRODUCT	A	B	C	D	E	F	G	H	Ød
	4.76	6.77	4.76	6.57	3.54	5.71	4.69	9.45	.35
DX20/DX30	121	172	121	167	90	145	119	240	9
	7.17	11.89	6.50	8.70	5.12	7.68	6.85	14.88	.39
DX60/DX100	182	302	165	221	130	195	174	378	10