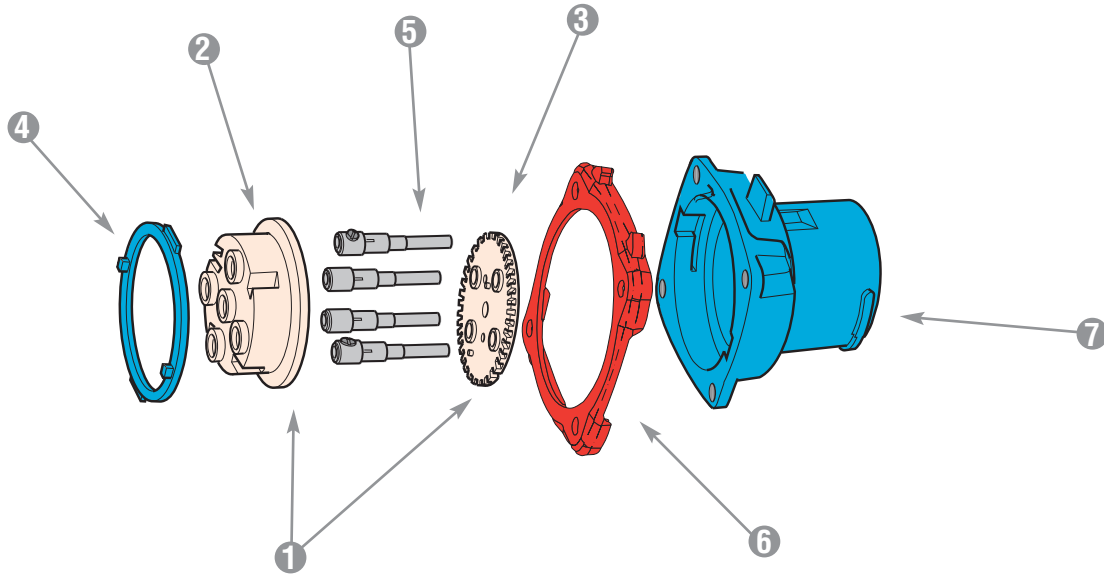









# Spare Parts Male Configuration

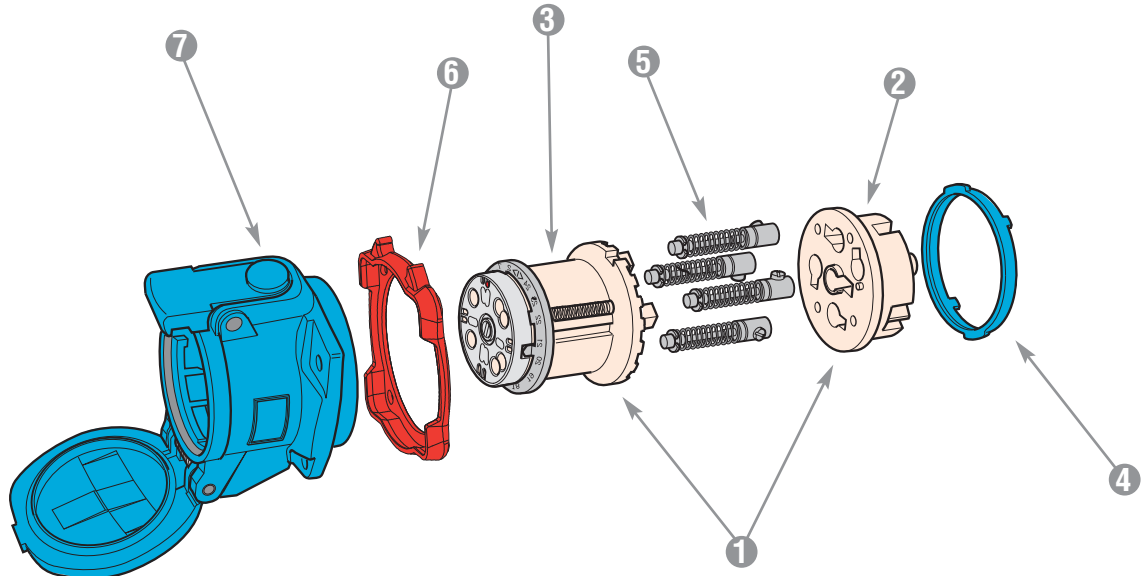







	DSN20 POLY	DSN30 POLY	DSN60 POLY
1 = Plug Interior	61-1A010*	61-3A010*	61-6A010*
2 = Interior Bottom	61-1A010-B	61-3A010-B	61-6A010-B
3 = Interior Top	61-1A010-T*	61-3A010-T*	61-6A010-T*
4 = Polyester Locking Ring	61-1A583	61-3A583	61-6A583
5 = Plug Contact	61-1A011	61-3A011	61-6A011
6 = Color-Coded Voltage Gasket	 61-1AB26	61-3AB26	61-6AB26
	 61-1AC26	61-3AC26	61-6AC26
	 61-1AR26	61-3AR26	61-6AR26
	 -	61-3AN26	61-6AN26
	 61-1AC26	61-3AC26	61-6AC26
7 = Plug Polyester Casing	61-1A014**	61-3A014**	61-6A014**

\* Voltage and phasing positions must be specified (5th, 6th & 7th digit of Part #) to duplicate your shutter and alignment notches.

\*\* For appropriate labeling on a device, please specify voltage, phasing, and product type

# Spare Parts Female Configuration



	DSN20 POLY	DSN30 POLY	DSN60 POLY
1 = Receptacle Interior	61-1A020*	61-3A020*	61-6A020*
2 = Interior Bottom	61-1A020-B	61-3A020-B	61-6A020-B
3 = Interior Top	61-1A020-T*	61-3A020-T*	61-6A020-T*
4 = Polyester Locking Ring	61-1A583	61-3A583	61-6A583
5 = Receptacle Contact	61-1A021	61-3A021	61-6A021
6 = Color-Coded Voltage Gasket	 61-1AB26	61-3AB26	61-6AB26
	 61-1AC26	61-3AC26	61-6AC26
	 61-1AR26	61-3AR26	61-6AR26
	 -	61-3AN26	61-6AN26
	 61-1AC26	61-3AC26	61-6AC26
7 = Receptacle Polyester Casing	61-1A024**	61-3A024**	61-6A024**

\* Voltage and phasing positions must be specified (5th, 6th & 7th digit of Part #) to duplicate your shutter and alignment notches.

\*\* For appropriate labeling on a device, please specify voltage, phasing, and product type

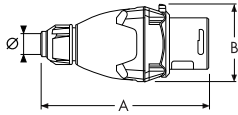


# Dimensions

## Inlet – Provided in inches and millimeters

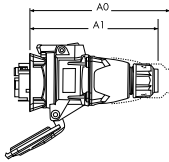
Dimensions are for reference only

### Plug



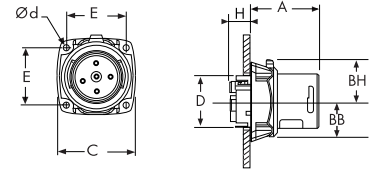
PRODUCT	A	B	Ø
	4.92	2.28	.27-.75
DSN20	125	58	7-19
	5.71	2.68	.32-.90
DSN30/DSN24	145	68	8-23
	5.98	3.27	.32-1.25
DSN60/DSN37	152	83	8-32

### Inlet with connector on/off



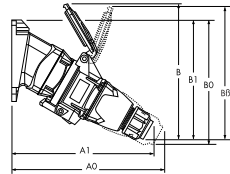
PRODUCT	A1	A0
	6.14	6.65
DSN20	156	169
	6.65	7.32
DSN30/DSN24	169	186
	6.89	8.03
DSN60/DSN37	175	204

### Inlet



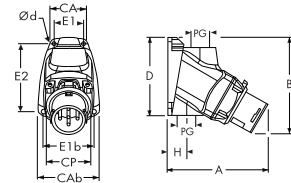
PRODUCT	A	BB	BH	C	D	E	H	Ød
	1.97	0.94	1.06	2.24	1.46	1.65	0.53	0.17
DSN20	50	24	27	57	37	42	13.5	4.2
	1.97	1.26	1.42	2.64	2.28	1.89	0.51	0.18
DSN30/DSN24	50	32	36	67	58	48	13	4.5
	2.13	1.54	1.73	3.07	2.68	2.17	0.59	0.19
DSN60/DSN37	54	39	44	78	68	55.2	15	4.8

### 30° inclined inlet/angle with connector on/off



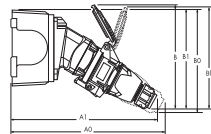
PRODUCT	A1	A0	B	B1	B0	BB
	7.28	7.72	6.38	5.94	6.18	
DSN20	185	196	162	151	157	
	7.68	8.27	8.23	6.73	7.09	
DSN30/DSN24	195	210	209	171	180	
	8.03	9.06	9.25	7.01	7.60	8.39
DSN60/DSN37	204	230	235	178	193	213

### 30° inlet/conduit box



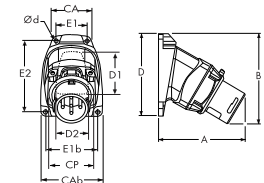
PRODUCT	A	B	CA	Cab	CP	D	E1	E1b	E2	H	PG	Ød
	4.53	4.45	1.77	2.68	2.24	3.54	1.42	2.20	3.07	1.48	0.50	0.18
DSN20	115	113	45	68	57	90	36	56	78	37.5		4.5
	4.41	4.13	3.31	3.31	2.64	4.21	2.76	2.76	2.76	0.69	0.50	0.24
DSN30/DSN24	112	105	84	84	67	107	70	70	70	17.5		6
	5.20	5.04	3.50	3.50	3.07	4.80	3.03	3.03	3.46	0.94	0.75	0.26
DSN60/DSN37	132	128	89	89	78	122	77	77	88	24		6.5

### 30° inclined inlet/angle/junction box with connector on/off



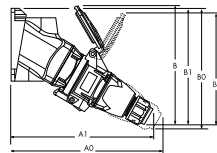
PRODUCT	A1	A0	B	B1	B0	BB
	9.88	10.31	6.38	6.06	6.30	
DSN20	251	262	162	154	160	
	10.16	10.75	8.23	6.85	7.20	
DSN30/DSN24	258	273	209	174	183	
	10.51	11.54	9.25	7.13	7.72	8.39
DSN60/DSN37	267	293	235	181	196	213

### 30° inlet/angle



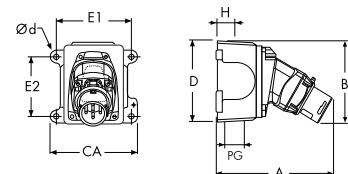
PRODUCT	A	B	CA	Cab	CP	D	D1	D2	E1	E1b	E2	Ød
	3.78	4.02	1.77	2.68	2.24	3.54	2.95	1.97	1.42	2.20	3.07	0.18
DSN20	96	102	45	68	57	90	75	50	36	56	78	4.5
	3.66	4.49	2.99	2.99	2.64	4.21	2.56	3.74	2.48	2.48	3.74	0.22
DSN30/DSN24	93	114	76	76	67	107	65	95	63	63	95	5.5
	4.06	4.80	2.99	2.99	3.07	4.21	2.56	3.74	2.48	2.48	3.74	0.22
DSN60/DSN37	103	122	76	76	78	107	65	95	63	63	95	5.5

### 30° inclined inlet/conduit box with connector on/off



PRODUCT	A1	A0	B	B1	B0	BB
	8.03	8.46	6.38	6.38	6.61	
DSN20	204	215	162	162	168	
	8.43	9.02	8.23	6.38	6.73	
DSN30/DSN24	214	229	209	162	171	
	9.17	10.20	9.25	7.24	7.83	8.39
DSN60/DSN37	233	259	235	184	199	213

### inlet/angle/metal junction box



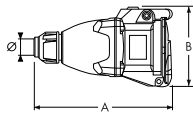
PRODUCT	A	B	CA	D	E1	E2	H	PG	Ød
	6.38	4.13	4.40	4.57	3.75	2.78	1.18	1.00	0.25
DSN20	162	105	111.8	116	95.3	70.6	30		6.4
	6.14	4.61	4.40	4.57	3.75	2.78	1.18	1.00	0.25
DSN30/DSN24	156	117	111.8	116	95.3	70.6	30		6.4
	6.54	4.92	4.40	4.57	3.75	2.78	1.18	1.00	0.25
DSN60/DSN37	166	125	111.8	116	95.3	70.6	30		6.4

# Dimensions

## Receptacle – Provided in inches and millimeters

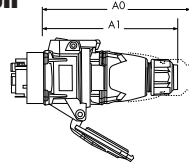
Dimensions are for reference only

### connector



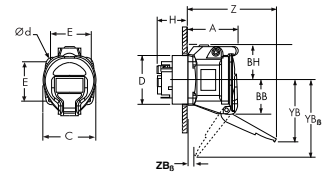
PRODUCT	A	B	Ø
DSN20	5.16	3.07	.27-.75
	131	78	7-19
DSN30/DSN24	6.38	4.06	.32-.90
	162	103	8-23
DSN60/DSN37	6.89	4.53	.32-1.25
	175	115	8-32

### receptacle with plug on/off



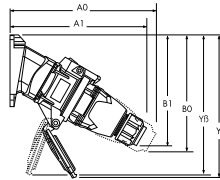
PRODUCT	A1	A0
DSN20	6.14	6.65
	156	169
DSN30/DSN24	6.65	7.32
	169	186
DSN60/DSN37	6.89	8.03
	175	204

### receptacle



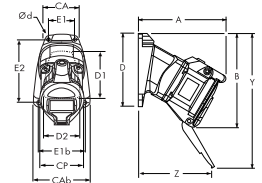
PRODUCT	A	BB	BH	C	D	E	H	YB	YBB	Z	ZB	Ød
DSN20	2.07	1.57	1.50	2.24	1.99	1.65	0.98	2.76		3.84		0.17
	52.7	40	38	57	50.5	42	25	70		97.5		4.2
DSN30/DSN24	2.61	2.09	1.97	2.87	2.28	1.89	0.59	3.86		4.47		0.18
	66.2	53	50	73	58	48	15	98		113.6		4.5
DSN60/DSN37	3.12	2.30	2.20	3.23	2.68	2.17	0.71	4.65	5.83	4.76	0.96	0.19
	79.2	58.5	56	82	68	55.2	18	118	148	121	24.4	4.8

### 30° inclined receptacle/angle with plug on/off



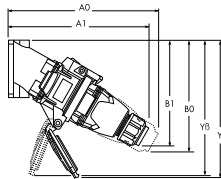
PRODUCT	A1	A0	B1	B0	Y	YB
DSN20	7.28	7.72	5.94	6.18	6.65	
	185	196	151	157	169	
DSN30/DSN24	7.68	8.27	6.73	7.09	8.23	
	195	210	171	180	209	
DSN60/DSN37	8.03	9.06	7.01	7.60	9.06	8.15
	204	230	178	193	230	207

### 30° receptacle/angle



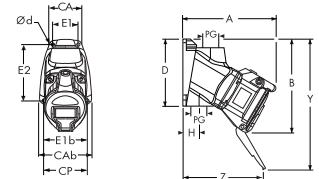
PRODUCT	A	B	CA	CAb	CP	D	D1	D2	E1	E1b	E2	Y	Z	Ød
DSN20	4.25	4.72	1.77	2.68	2.24	3.54	2.95	1.97	1.42	2.20	3.07	6.65	3.62	0.18
	108	120	45	68	57	90	75	50	36	56	78	169	92	4.5
DSN30/DSN24	4.69	5.55	2.99	2.99	2.87	4.21	2.56	3.74	2.48	2.48	3.74	8.23	3.39	0.22
	119	141	76	76	73	107	65	95	63	63	95	209	86	5.5
DSN60/DSN37	5.35	6.14	2.99	2.99	3.23	4.21	2.56	3.74	2.48	2.48	3.74	9.06	3.35	0.22
	136	156	76	76	82	107	65	95	63	63	95	230	85	5.5

### 30° inclined receptacle/conduit box with plug on/off



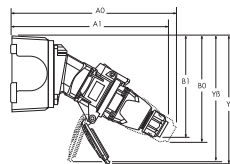
PRODUCT	A1	A0	B1	B0	Y	YB
DSN20	8.03	8.46	6.38	6.61	7.09	
	204	215	162	168	180	
DSN30/DSN24	8.43	9.02	6.38	6.73	7.87	
	214	229	162	171	200	
DSN60/DSN37	9.17	10.20	7.24	7.83	9.29	8.39
	233	259	184	199	236	213

### 30° receptacle/conduit box



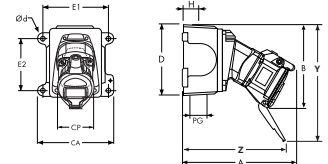
PRODUCT	A	B	CA	CAb	CP	D	E1	E1b	E2	H	PG	Y	Z	Ød
DSN20	5.00	5.16	1.77	2.68	2.24	3.54	1.42	2.20	3.07	1.48	0.50	7.09	4.37	0.18
	127	131	45	68	57	90	36	56	78	37.5		180	111	4.5
DSN30/DSN24	5.43	5.20	3.31	3.31	2.87	4.21	2.76	2.76	2.76	0.69	0.50	7.87	4.13	0.24
	138	132	84	84	73	107	70	70	70	17.5		200	105	6
DSN60/DSN37	6.50	6.38	3.50	3.50	3.23	4.80	3.03	3.03	3.46	0.94	0.75	9.29	4.49	0.26
	165	162	89	89	82	122	77	77	88	24		236	114	6.5

### 30° inclined receptacle/angle/junction box with plug on/off



PRODUCT	A1	A0	B1	B0	Y	YB
DSN20	9.88	10.31	6.06	6.30	6.77	
	251	262	154	160	172	
DSN30/DSN24	10.16	10.75	6.85	7.20	8.35	
	258	273	174	183	212	
DSN60/DSN37	10.51	11.54	7.13	7.72	9.17	8.27
	267	293	181	196	233	210

### receptacle/angle/metal junction box



PRODUCT	A	B	CA	CP	D	E1	E2	H	PG	Y	Z	Ød
DSN20	6.85	4.84	4.40	2.24	4.57	3.75	2.78	1.18	1.00	6.77	6.22	0.25
	174	123	111.8	57	116	95.3	70.6	30		172	158	6.4
DSN30/DSN24	7.17	5.67	4.40	2.87	4.57	3.75	2.78	1.18	1.00	8.35	5.87	0.25
	182	144	111.8	73	116	95.3	70.6	30		212	149	6.4
DSN60/DSN37	7.83	6.26	4.40	3.23	4.57	3.75	2.78	1.18	1.00	9.17	5.83	0.25
	199	159	111.8	82	116	95.3	70.6	30		233	148	6.4