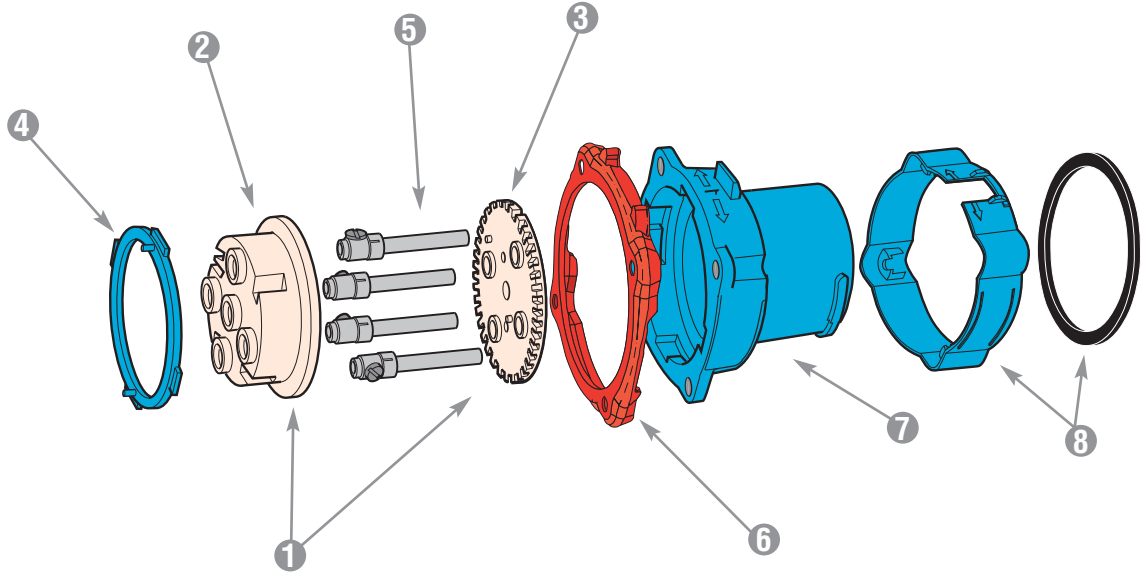









Spare Parts Male Configuration



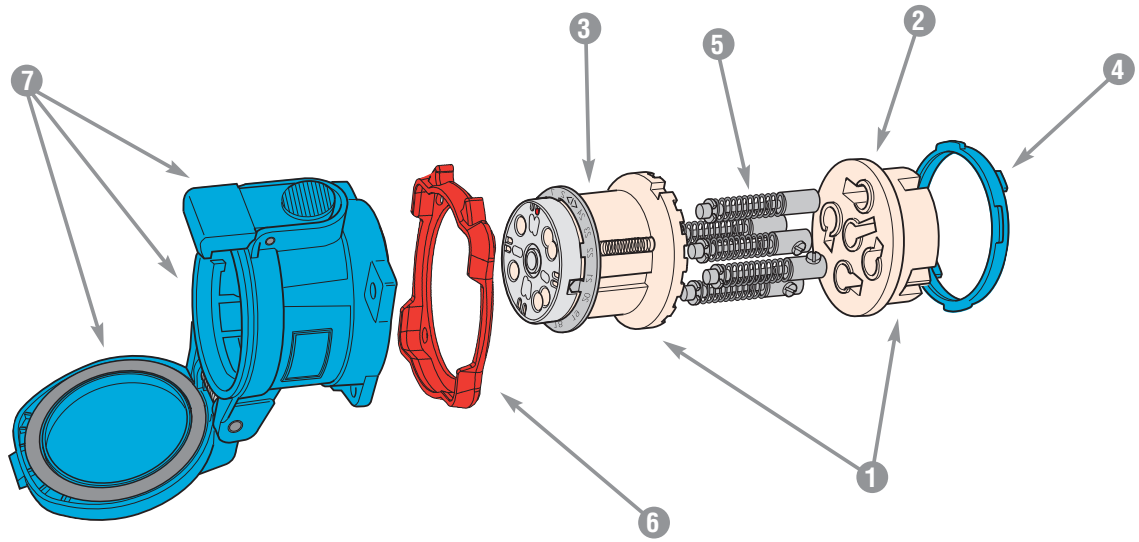
	DS20 POLY	DS30 POLY	DS60 POLY	DS60 METAL	DS100C POLY	DS100C METAL	DS100 POLY	DS100 METAL	DS200 METAL
1 = Plug Interior***	31-1A010*	31-3A010*	31-6A010*	31-6A010*	31-6A010-C*	31-6A010-C*	31-9A010*	39-9A010*	39-2A010*
1 = Plug Interior with Ground Contacts	-	-	-	39-6A110*	-	39-6A110-C*	-	39-9A110*	39-2A110*
2 = Interior Bottom	31-1A010-B	31-3A010-B	31-6A010-B	31-6A010-B	31-6A010-C-B	31-6A010-C-B	31-9A010-B	39-9A010-B	39-2A010-B
3 = Interior Top	31-1A010-T*	31-3A010-T*	31-6A010-T*	31-6A010-T*	31-6A010-C-T*	31-6A010-C-T*	31-9A010-T*	39-9A010-T*	39-2A010-T*
4 = Polyester Locking Ring	31-1A583	31-3A583	31-6A583	-	31-6A583	-	31-9A583	-	-
4 = Metal Locking Ring	-	-	-	39-6A583	-	39-6A583	-	39-9A583	39-2A583
5 = Plug Contact	31-1A011	31-3A011-380	31-6A011	31-6A011	31-6A011-C	31-6A011-C	39-9A011	39-9A011	39-2A011
6 = Color-Coded Voltage Gasket	 31-1AB26	31-3AB26	31-6AB26	31-6AB26	31-6AB26	31-6AB26	31-9AB26	31-9AB26	39-2AB26
	 31-1AC26	31-3AC26	31-6AC26	31-6AC26	31-6AC26	31-6AC26	31-9AC26	31-9AC26	39-2AC26
	 31-1AR26	31-3AR26	31-6AR26	31-6AR26	31-6AR26	31-6AR26	31-9AR26	31-9AR26	39-2AR26
	 31-1AN26	31-3AN26	31-6AN26	31-6AN26	31-6AN26	31-6AN26	31-9AN26	31-9AN26	39-2AN26
	 31-1AC26	31-3AC26	31-6AC26	31-6AC26	31-6AC26	31-6AC26	31-9AC26	31-9AC26	39-2AC26
7 = Plug Polyester Casing	31-1A014**	31-3A014**	31-6A014**	-	31-6A014**	-	31-9A014**	-	-
7 = Plug Metal Casing	-	-	-	39-6A014**	-	39-6A014**	-	39-9A014**	39-2A014**
Ground Ring (Not Shown)	-	-	-	39-6A523	-	39-6A523	-	39-9A523P	39-2A523
8 = HP Gasket and Ring	31-1A677	31-3A677	39-6A677	39-6A677	39-6A677	39-6A677	-	39-9A677	39-2A677

* Voltage and phasing positions must be specified (5th, 6th & 7th digit of Part #) to duplicate your shutter and alignment notches.

** For appropriate labeling on a device, please specify voltage, phasing, and product type

***For interiors with pilot contacts, contact Customer Service for part numbers.

Spare Parts Female Configuration



	DS20 POLY	DS30 POLY	DS60 POLY	DS60 METAL	DS100C POLY	DS100C METAL	DS100 POLY	DS100 METAL	DS200 METAL
① = Receptacle Interior***	31-1A020*	31-3A020*	31-6A020*	31-6A020*	31-6A020-C*	31-6A020-C*	31-9A020*	39-9A020*	39-2A020*
① = Receptacle Interior with Ground Contacts	-	-	-	39-6A220*	-	39-6A220-C*	-	39-9A220*	39-2A220*
② = Interior Bottom	31-1A020-B	31-3A020-B	31-6A020-B	31-6A020-B	31-6A020-C-B	31-6A020-C-B	31-9A020-B	39-9A020-B	39-2A020-B
③ = Interior Top	31-1A020-T*	31-3A020-T*	31-6A020-T*	31-6A020-T*	31-6A020-C-T*	31-6A020-C-T*	31-9A020-T*	39-9A020-T*	39-2A020-T*
④ = Polyester Locking Ring	31-1A583	31-3A583	31-6A583	-	31-6A583	-	31-9A583	-	-
④ = Metal Locking Ring	-	-	-	39-6A583	-	39-6A583	-	39-9A583	39-2A583
⑤ = Receptacle Contact	31-1A021	31-3A021-380	31-6A021	31-6A021	31-6A021-C	31-6A021-C	39-9A021	39-9A021	39-2A021
⑥ = Color-Coded Voltage Gasket	208V 31-1AB26 250V 31-1AC26 480V 31-1AR26 600V 31-1AN26 125V 31-1AC26	31-3AB26 31-3AC26 31-3AR26 31-3AN26 31-3AC26	31-6AB26 31-6AC26 31-6AR26 31-6AN26 31-6AC26	31-6AB26 31-6AC26 31-6AR26 31-6AN26 31-6AC26	31-6AB26 31-6AC26 31-6AR26 31-6AN26 31-6AC26	31-6AB26 31-6AC26 31-6AR26 31-6AN26 31-6AC26	31-9AB26 31-9AC26 31-9AR26 31-9AN26 31-9AC26	31-9AB26 31-9AC26 31-9AR26 31-9AN26 31-9AC26	39-2AB26 39-2AC26 39-2AR26 39-2AN26 39-2AC26
⑦ = Receptacle Polyester Casing with Lid	31-1A024**	31-3A024**	31-6A024**	-	31-6A024**	-	31-9A024**	-	-
⑦ = Receptacle Metal Casing with Lid	-	-	-	39-6A024**	-	39-6A024**	-	39-9A024**	39-2A024**
Ground Ring (Not Shown)	-	-	-	39-6A523	-	39-6A523	-	39-9A523	39-2A523

* Voltage and phasing positions must be specified (5th, 6th & 7th digit of Part #) to duplicate your shutter and alignment notches.

** For appropriate labeling on a device, please specify voltage, phasing, and product type.

***For interiors with pilot contacts, contact Customer Service for part numbers.

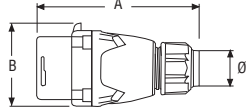


Dimensions

Inlet – Provided in inches and millimeters

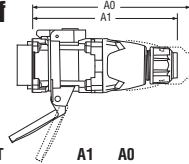
Dimensions are for reference only

Plug



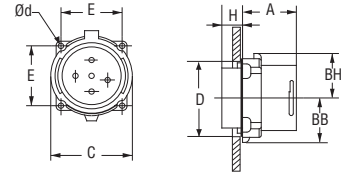
PRODUCT	A	B	Ø
	5.67	2.76	.32-.90
DS20/DS24	144	70	8-23
	5.83	3.23	.32-1.25
DS30/DS37	148	82	8-32
	6.89	3.86	.55-1.53
DS60/DS100C/DS7	175	98	14-39
	7.68	4.92	1.00-1.75
DS100	195	125	25-45
	10.24	5.55	1.50-2.25
DS200	260	141	40-58

Inlet with connector on/off



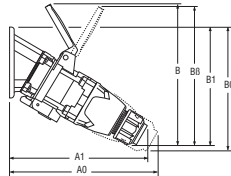
PRODUCT	A1	A0
	6.54	7.17
DS20/DS24	166	182
	6.85	7.48
DS30/DS37	174	190
	7.76	8.70
DS60/DS100C/DS7	197	221
	9.69	10.83
DS100	246	275
	12.20	13.43
DS200	310	341

Inlet



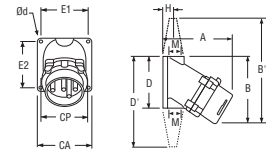
PRODUCT	A	BB	BH	C	D	E	H	Ød
	1.89	1.28	1.46	2.62	2.28	1.89	0.55	0.20
DS20/DS24	48	32.5	37	66.5	58	48.1	14	5.0
	2.05	1.48	1.75	3.07	2.76	2.17	0.71	0.20
DS30/DS37	52	37.5	44.5	78	70	55.1	18	5
	2.20	1.77	2.09	3.62	3.15	2.59	1.06	0.22
DS60/DS100C/DS7	56	45	53	92	80	65.8	27	5.5
	2.80	2.40	2.52	4.45	3.94	3.20	1.02	0.24
DS100	71	61	64	113	100	81.3	26	6
	3.11	2.87	2.68	5.12	4.65	3.86	1.57	0.26
DS200	79.0	73	68	130	118	98	40	6.5

30° inclined inlet/angle with connector on/off



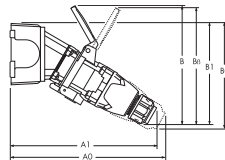
PRODUCT	A1	A0	B	B1	B0	BB
	7.56	8.11	7.24	6.69	7.01	7.83
DS20/DS24	192	206	184	170	178	199
	7.99	8.54	8.46	7.01	7.32	8.46
DS30/DS37	203	217	215	178	189	215
	9.02	9.84	9.76	8.35	8.82	10.00
DS60/DS100C/DS7	229	250	248	212	224	254
	11.89	12.87	12.24	9.53	10.12	
DS100	302	327	311	242	257	
	11.50	12.13	16.81	13.66	14.72	
DS200 60°	292	308	427	347	374	

30° inlet/conduit box



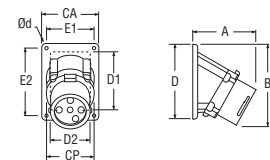
PRODUCT	A	B	CA	CP	D	E1	E2	H	PG	Ød
	4.37	4.13	3.31	2.64	3.31	2.76	2.76	0.69	0.50	0.24
DS20/DS24	111	105	84	67	84	70	70	17.5		6
	5.08	4.96	3.50	2.60	3.94	3.03	3.46	0.94	0.75	0.26
DS30/DS37	129	126	89	66	100	77	88	24		6.5
	6.69	6.22	4.13	3.62	5.04	3.50	4.41	1.22	1.25	0.30
DS60/DS100C/DS7 poly	170	158	105	92	128	89	112	31		7.5

30° inclined inlet/angle/junction box with connector on/off



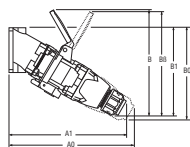
PRODUCT	A1	A0	B	B1	B0	BB
	10.04	10.59	7.24	6.81	7.13	7.83
DS20/DS24	255	269	184	173	181	199
	10.59	11.02	8.46	7.13	7.44	8.46
DS30/DS37	269	280	215	181	189	215
	12.09	12.91	9.76	8.54	9.02	10.00
DS60/DS100C/DS7	307	328	248	217	229	254
	15.51	16.50	12.24	9.53	10.12	
DS100	394	419	311	242	257	
	15.67	16.30	16.81	13.66	14.72	
DS200 60°	398	414	427	347	374	

30° inlet/angle



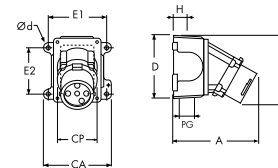
PRODUCT	A	B	CA	CP	D	D1	D2	E1	E2	Ød
	3.62	4.49	2.99	2.64	4.21	2.56	2.44	2.48	3.74	0.22
DS20/DS24	92	114	76	67	107	65	62	63	95	5.5
	3.94	4.72	2.99	2.60	4.21	2.56	2.68	2.48	3.74	0.22
DS30/DS37	100	120	76	66	107	65	68	63	95	5.5
	4.29	5.75	4.02	3.62	5.35	4.372	3.54	3.44	4.80	0.26
DS60/DS100C/DS7	109	146	102	92	136	111	90	87.3	122	6.5
	6.02	6.26	5.51	4.45	5.59	4.33	3.94	4.87	4.87	0.28
DS100	153	159	140	113	142	110	100	123.8	123.8	7.0
	6.93	8.90	7.20	5.12	7.20	5.91	5.91	6.50	6.50	0.28
DS200 60°	176	226	183	130	183	150	150	165	165	7.0

30° inclined inlet/conduit box with connector on/off



PRODUCT	A1	A0	B	B1	B0	BB
	8.31	8.86	7.24	6.34	6.65	7.83
DS20/DS24	211	225	184	161	169	199
	9.13	9.69	8.46	7.24	7.56	8.46
DS30/DS37	232	246	215	184	192	215
	11.14	11.97	9.76	8.66	9.13	10.00
DS60/DS100C/DS7 poly	283	304	248	220	232	254

inlet/angle/metal junction box



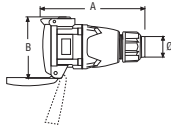
PRODUCT	A	B	CA	CP	D	E1	E2	H	PG	Ød
	6.10	4.61	4.40	2.64	4.57	3.75	2.78	1.18	1.00	0.25
DS20/DS24	155	117	111.8	67	116	95.3	70.6	30		6.4
	6.42	4.84	4.40	2.60	4.57	3.75	2.78	1.18	1.00	0.25
DS30/DS37	163	123	111.8	66	116	95.3	70.6	30		6.4
	7.36	5.94	5.75	3.62	5.81	5.00	3.82	1.57	1.50	0.30
DS60/DS100C/DS7	187	151	146	92	147.5	127	97	40		7.5
	9.65	6.26	7.54	4.45	5.65	6.62	4.24	1.93	2.00	0.31
DS100	245	159	191.5	113	143.5	168.1	107.7	49		7.8
	11.10	8.90	8.94	5.12	7.32	8.25	6.38	2.05	2.50	0.33
DS200 60°	282	226	227	130	186	209.6	162	52		8.4

Dimensions

Receptacle – Provided in inches and millimeters

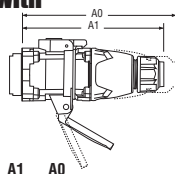
Dimensions are for reference only

connector



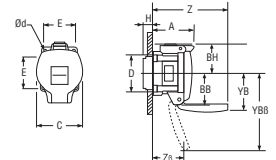
PRODUCT	A	B	Ø
DS20/DS24	6.30	3.74	.32-.90
	160	95	8-23
DS30/DS37	6.50	4.25	.32-1.25
	165	108	8-32
DS60/DS100C/DS7	7.05	4.84	.55-1.53
	179	123	14-39
DS100	8.94	5.71	1.00-1.75
	227	145	25-45
DS200	11.46	6.57	1.50-2.25
	291	167	40-58

receptacle with plug on/off



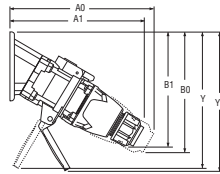
PRODUCT	A1	A0
DS20/DS24	6.54	7.17
	166	182
DS30/DS37	6.85	7.48
	174	190
DS60/DS100C/DS7	7.76	8.70
	197	221
DS100	9.69	10.83
	246	275
DS200	12.20	13.43
	310	341

receptacle



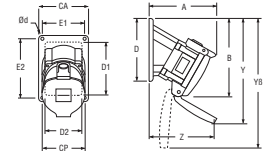
PRODUCT	A	BB	BH	C	D	E	H	YB	YBB	Z	ZB	Ød
DS20/DS24	2.56	1.97	1.77	2.72	2.28	1.89	0.59	2.56	4.25	4.75	2.99	0.20
	64.9	50	45	69	58	48.1	15	65	108	120.6	75.9	5
DS30/DS37	2.70	2.15	2.11	3.15	2.76	2.17	0.83	3.94	5.20	4.76	2.26	0.20
	68.6	54.5	53.5	80	70	55.1	21	100	132	121	57.5	5
DS60/DS100C/DS7	3.00	2.46	2.36	3.86	3.15	2.59	1.06	4.33	5.98	5.76	3.41	0.22
	76.2	62.5	60	98	80	65.8	27	110	152	146.2	86.7	5.5
DS100	4.45	2.95	2.76	4.45	3.94	3.20	0.94	5.39	7.76	7.76	0.24	6
	113.1	75	70	113	100	81.3	24	137	197.1	197.1	6	6
DS200	4.31	2.95	3.62	5.16	4.65	3.86	1.50	4.53	8.38	8.38	0.26	6.5
	109.5	75	92	131	118	98	38	115	212.9	212.9	6.5	6.5

30° inclined receptacle/angle with plug on/off



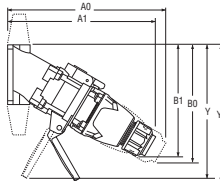
PRODUCT	A1	A0	B1	B0	Y	YB
DS20/DS24	7.56	8.11	6.69	7.01	7.24	7.80
	192	206	170	178	184	198
DS30/DS37	7.99	8.54	7.01	7.32	8.27	8.27
	203	217	178	186	210	210
DS60/DS100C/DS7	9.02	9.84	8.35	8.82	10.00	10.28
	229	250	212	224	254	261
DS100	11.89	12.87	9.53	10.12	11.77	11.77
	302	327	242	257	299	299
DS200 60°	11.50	12.13	13.66	14.72	11.54	11.54
	292	308	347	374	293	293

30° receptacle/angle



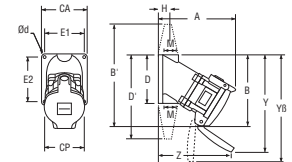
PRODUCT	A	B	CA	CP	D	D1	D2	E1	E2	Y	YB	Z	Ød
DS20/DS24	4.57	5.39	2.99	2.72	4.21	2.56	2.44	2.48	3.74	7.24	7.80	4.29	0.22
	116	137	76	69	107	65	62	63	95	184	198	109	5.5
DS30/DS37	4.92	5.71	2.99	3.15	4.21	2.56	2.68	2.48	3.74	8.27	8.27	4.29	0.22
	125	145	76	80	107	65	68	63	95	210	210	109	5.5
DS60/DS100C/DS7	5.43	6.97	4.02	3.86	5.35	4.37	3.54	3.44	4.80	10.00	10.28	4.49	0.26
	138	177	102	98	136	111	90	87.3	122	254	261	114	6.5
DS100	7.87	7.80	5.51	4.45	5.59	4.33	3.94	4.87	4.87	11.77	11.77	6.65	0.28
	200	198	140	113	142	110	100	123.8	123.8	299	299	169	7
DS200 60°	8.78	9.80	7.20	5.16	7.20	5.91	5.91	6.50	6.50	14.96	14.96	3.78	0.28
	223	249	183	131	183	150	150	165	165	380	380	96	7

30° inclined receptacle/conduit box with plug on/off



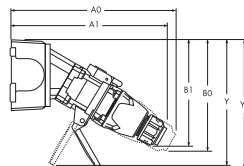
PRODUCT	A1	A0	B1	B0	Y	YB
DS20/DS24	8.31	8.86	6.34	6.65	6.89	7.44
	211	225	161	169	175	189
DS30/DS37	9.13	9.69	7.24	7.56	8.50	8.50
	232	246	184	192	216	216
DS60/DS100C/DS7	11.14	11.97	8.66	9.13	10.31	10.59
	283	304	220	232	262	269

30° receptacle/conduit box



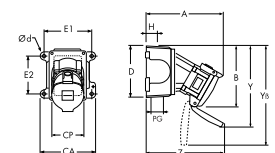
PRODUCT	A	B	CA	CP	D	E1	E2	H	PG	Y	YB	Z	Ød
DS20/DS24	5.31	5.04	3.31	2.72	3.31	2.76	2.76	0.69	0.50	6.89	7.44	5.04	0.24
	135	128	84	69	84	70	70	17.5	12.7	175	189	128	6
DS30/DS37	6.06	5.94	3.50	3.15	3.94	3.03	3.46	0.94	0.75	8.50	8.50	5.08	0.26
	154	151	89	80	100	77	88	24	19.0	216	216	129	6.5
DS60/DS100C/DS7 poly	7.56	7.28	4.13	3.86	5.04	3.50	4.41	1.22	1.25	10.31	10.59	6.61	0.30
	192	185	105	98	128	89	112	31	31.8	262	269	168	7.5

30° inclined receptacle/angle/junction box with plug on/off



PRODUCT	A1	A0	B1	B0	Y	YB
DS20/DS24	10.04	10.59	6.81	7.13	7.36	7.91
	255	269	173	181	187	201
DS30/DS37	10.47	11.02	7.13	7.44	8.39	8.39
	266	280	181	189	213	213
DS60/DS100C/DS7	12.09	12.91	8.54	9.02	10.20	10.47
	307	328	217	229	259	266
DS100	15.51	16.50	9.53	10.12	11.77	11.77
	394	419	242	257	299	299
DS200 60°	15.67	16.30	13.66	14.72	11.54	11.54
	398	414	347	374	293	293

receptacle/angle/metal junction box



PRODUCT	A	B	CA	CP	D	E1	E2	H	PG	Y	YB	Z	Ød
DS20/DS24	7.05	5.51	4.40	2.72	4.57	3.75	2.78	1.18	1.00	7.36	7.91	6.77	0.25
	179	140	111.8	69	116	95.3	70.6	30	25.4	187	201	172	6.4
DS30/DS37	7.40	5.83	4.40	3.15	4.57	3.75	2.78	1.18	1.00	8.39	8.39	6.77	0.25
	188	148	111.8	80	116	95.3	70.6	30	25.4	213	213	172	6.4
DS60/DS100C/DS7	8.50	7.17	5.75	3.86	5.81	5.00	3.82	1.57	1.50	10.20	10.47	7.56	0.30
	216	182	146	98	147.5	127	97	40	38.1	259	266	192	7.5
DS100	11.50	7.80	7.54	4.45	5.65	6.62	4.24	1.93	2.00	11.77	11.77	10.28	0.31
	292	198	191.5	113	143.5	168.1	107.7	49	50.8	299	299	261	7.8
DS200 60°	12.95	9.80	8.94	5.16	7.32	8.25	6.38	2.05	2.50	14.96	14.96	11.89	0.33
	329	249	227	131	186	209.6	162	52	63.5	380	380	302	8.4