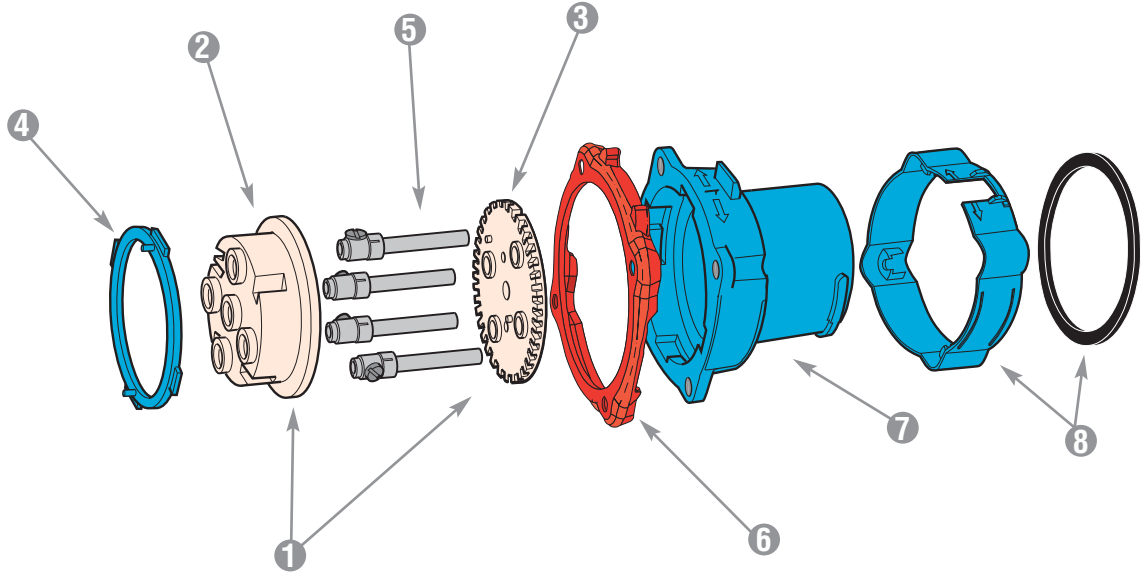




Spare Parts Male Configuration

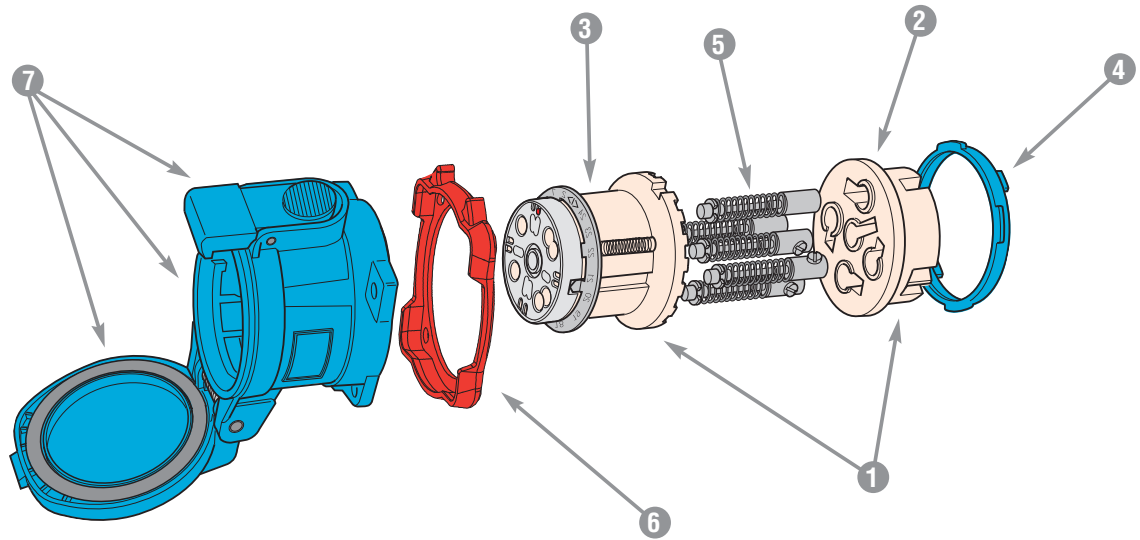







	DR30 POLY	DR50 POLY	DR100 POLY	DR100 METAL	DR150 POLY	DR150 METAL	DR250 METAL	
1 = Plug Interior	31-1A010*	31-3A010*	31-6A010*	31-6A010*	31-9A010*	39-9A010*	39-2A010*	
1 = Plug Interior with Ground Contacts	-	-	-	39-6A110*	-	39-9A110*	39-2A110*	
2 = Interior Bottom	31-1A010-B	31-3A010-B	31-6A010-B	31-6A010-B	31-9A010-B	39-9A010-B	39-2A010-B	
3 = Interior Top	31-1A010-T*	31-3A010-T*	31-6A010-T*	31-6A010-T*	31-9A010-T*	39-9A010-T*	39-2A010-T*	
4 = Polyester Locking Ring	31-1A583	31-3A583	31-6A583	-	31-9A583	-	-	
4 = Metal Locking Ring	-	-	-	39-6A583	-	39-9A583	39-2A583	
5 = Plug Contact	31-1A011	31-3A011-380	31-6A011	31-6A011	39-9A011	39-9A011	39-2A011	
6 = Color-Coded Voltage Gasket	<div style="display: flex; align-items: center;"> <div style="width: 15px; height: 10px; border-radius: 5px; background-color: #0070C0; margin-right: 5px;"></div> 208V </div> <div style="display: flex; align-items: center;"> <div style="width: 15px; height: 10px; border-radius: 5px; background-color: #FFC000; margin-right: 5px;"></div> 250V </div> <div style="display: flex; align-items: center;"> <div style="width: 15px; height: 10px; border-radius: 5px; background-color: #C00000; margin-right: 5px;"></div> 480V </div> <div style="display: flex; align-items: center;"> <div style="width: 15px; height: 10px; border-radius: 5px; background-color: #000000; margin-right: 5px;"></div> 600V </div> <div style="display: flex; align-items: center;"> <div style="width: 15px; height: 10px; border-radius: 5px; background-color: #FFC000; margin-right: 5px;"></div> 125V </div>	31-1AB26	31-3AB26	31-6AB26	31-6AB26	31-9AB26	31-9AB26	39-2AB26
	31-1AC26	31-3AC26	31-6AC26	31-6AC26	31-9AC26	31-9AC26	39-2AC26	
	31-1AR26	31-3AR26	31-6AR26	31-6AR26	31-9AR26	31-9AR26	39-2AR26	
	31-1AN26	31-3AN26	31-6AN26	31-6AN26	31-9AN26	31-9AN26	39-2AN26	
	31-1AC26	31-3AC26	31-6AC26	31-6AC26	31-9AC26	31-9AC26	39-2AC26	
7 = Plug Polyester Casing	31-1A014**	31-3A014**	31-6A014**	-	31-9A014**	-	-	
7 = Plug Metal Casing	-	-	-	39-6A014**	-	39-9A014**	39-2A014**	
Ground Ring (Not Shown)	-	-	-	39-6A523	-	39-9A523P	39-2A523	
8 = HP Gasket and Ring	31-1A677	31-3A677	39-6A677	39-6A677	-	39-9A677	39-2A677	

* Voltage and phasing positions must be specified (5th, 6th & 7th digit of Part #) to duplicate your shutter and alignment notches.

** For appropriate labeling on a device, please specify voltage, phasing, and product type

Spare Parts Female Configuration



	DR30 POLY	DR50 POLY	DR100 POLY	DR100 METAL	DR150 POLY	DR150 METAL	DR250 METAL
1 = Receptacle Interior	31-1A020*	31-3A020 *	31-6A020*	31-6A020*	31-9A020*	39-9A020*	39-2A020*
1 = Receptacle Interior with Ground Contacts	-	-	-	39-6A220*	-	39-9A220*	39-2A220*
2 = Interior Bottom	31-1A020-B	31-3A020-B	31-6A020-B	31-6A020-B	31-9A020-B	39-9A020-B	39-2A020-B
3 = Interior Top	31-1A020-T*	31-3A020-T*	31-6A020-T*	31-6A020-T*	31-9A020-T*	39-9A020-T*	39-2A020-T*
4 = Polyester Locking Ring	31-1A583	31-3A583	31-6A583	-	31-9A583	-	-
4 = Metal Locking Ring	-	-	-	39-6A583	-	39-9A583	39-2A583
5 = Receptacle Contact	31-1A021	31-3A021-380	31-6A021	31-6A021	39-9A021	39-9A021	39-2A021
6 = Color-Coded Voltage Gasket	 31-1AB26	31-3AB26	31-6AB26	31-6AB26	31-9AB26	31-9AB26	39-2AB26
	 31-1AC26	31-3AC26	31-6AC26	31-6AC26	31-9AC26	31-9AC26	39-2AC26
	 31-1AR26	31-3AR26	31-6AR26	31-6AR26	31-9AR26	31-9AR26	39-2AR26
	 31-1AN26	31-3AN26	31-6AN26	31-6AN26	31-9AN26	31-9AN26	39-2AN26
	 31-1AC26	31-3AC26	31-6AC26	31-6AC26	31-9AC26	31-9AC26	39-2AC26
7 = Receptacle Polyester Casing with Lid	31-1A024**	31-3A024**	31-6A024**	-	31-9A024**	-	-
7 = Receptacle Metal Casing with Lid	-	-	-	39-6A024**	-	39-9A024**	39-2A024**
Ground Ring (Not Shown)	-	-	-	39-6A523	-	39-9A523	39-2A523

* Voltage and phasing positions must be specified (5th, 6th & 7th digit of Part #) to duplicate your shutter and alignment notches.

** For appropriate labeling on a device, please specify voltage, phasing, and product type

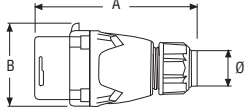


Dimensions

Inlet – Provided in inches and millimeters

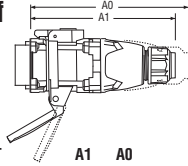
Dimensions are for reference only

Plug



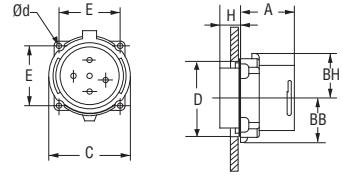
PRODUCT	A	B	Ø
DR30	5.67 144	2.76 70	.32-.90 8-23
DR50	5.83 148	3.23 82	.32-1.25 8-32
DR100/DR7	6.89 175	3.86 98	.55-1.53 14-39
DR150	7.68 195	4.92 125	1.00-1.75 25-45
DR250	10.24 260	5.55 141	1.50-2.25 40-58

Inlet with connector on/off



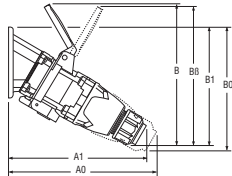
PRODUCT	A1	A0
DR30	6.54 166	7.17 182
DR50	6.85 174	7.48 190
DR100/DR7	7.76 197	8.70 221
DR150	9.69 246	10.83 275
DR250	12.20 310	13.43 341

Inlet



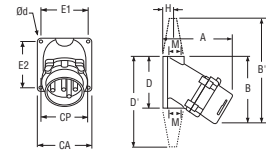
PRODUCT	A	BB	BH	C	D	E	H	Ød
DR30	1.89 48	1.28 32.5	1.46 37	2.62 66.5	2.28 58	1.89 48.1	0.55 14	0.20 5.0
DR50	2.05 52	1.48 37.5	1.75 44.5	3.07 78	2.76 70	2.17 55.1	0.71 18	0.20 5
DR100/DR7	2.20 56	1.77 45	2.09 53	3.62 92	3.15 80	2.59 65.8	1.06 27	0.22 5.5
DR150	2.80 71	2.40 61	2.52 64	4.45 113	3.94 100	3.20 81.3	1.02 26	0.24 6
DR250	3.11 79.0	2.87 73	2.68 68	5.12 130	4.65 118	3.86 98	1.57 40	0.26 6.5

30° inclined inlet/angle with connector on/off



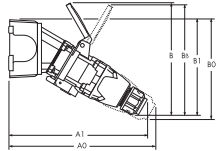
PRODUCT	A1	A0	B	B1	B0	BB
DR30	7.56 192	8.11 206	7.24 184	6.69 170	7.01 178	7.83 199
DR50	7.99 203	8.54 217	8.46 215	7.01 178	7.32 18	8.46 215
DR100/DR7	9.02 229	9.84 250	9.76 248	8.35 212	8.82 224	10.00 254
DR150	11.89 302	12.87 327	12.24 311	9.53 242	10.12 257	
DR250 60°	11.50 292	12.13 308	16.81 427	13.66 347	14.72 374	

30° inlet/conduit box



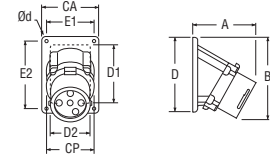
PRODUCT	A	B	CA	CP	D	E1	E2	H	PG	Ød
DR30	4.37 111	4.13 105	3.31 84	2.64 67	3.31 84	2.76 70	2.76 70	0.69 17.5		0.24 6
DR50	5.08 129	4.96 126	3.50 89	2.60 66	3.94 100	3.03 77	3.46 88	0.94 24	0.75 19	0.26 6.5
DR100/DR7 poly	6.69 170	6.22 158	4.13 105	3.62 92	5.04 128	3.50 89	4.41 112	1.22 31	1.25 31	0.30 7.5

30° inclined inlet/angle/junction box with connector on/off



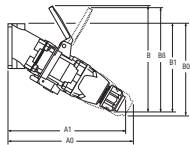
PRODUCT	A1	A0	B	B1	B0	BB
DR30	10.04 255	10.59 269	7.24 184	6.81 173	7.13 181	7.83 199
DR50	10.59 269	11.02 280	8.46 215	7.13 181	7.44 189	8.46 215
DR100/DR7	12.09 307	12.91 328	9.76 248	8.54 217	9.02 229	10.00 254
DR150	15.51 394	16.50 419	12.24 311	9.53 242	10.12 257	
DR250 60°	15.67 398	16.30 414	16.81 427	13.66 347	14.72 374	

30° inlet/angle



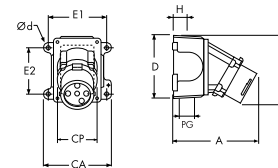
PRODUCT	A	B	CA	CP	D	D1	D2	E1	E2	Ød
DR30	3.62 92	4.49 114	2.99 76	2.64 67	4.21 107	2.56 65	2.44 62	2.48 63	3.74 95	0.22 5.5
DR50	3.94 100	4.72 120	2.99 76	2.60 66	4.21 107	2.56 65	2.68 68	2.48 63	3.74 95	0.22 5.5
DR100/DR7	4.29 109	5.75 146	4.02 102	3.62 92	5.35 136	4.37 111	3.54 90	3.44 87.3	4.80 122	0.26 6.5
DR150	6.02 153	6.26 159	5.51 140	4.45 113	5.59 142	4.33 110	3.94 100	4.87 123.8	0.28 7.0	
DR250 60°	6.93 176	8.90 226	7.20 183	5.12 130	7.20 183	5.91 150	5.91 150	6.50 165	6.50 165	0.28 7.0

30° inclined inlet/conduit box with connector on/off



PRODUCT	A1	A0	B	B1	B0	BB
DR30	8.31 211	8.86 225	7.24 184	6.34 161	6.65 169	7.83 199
DR50	9.13 232	9.69 246	8.46 215	7.24 184	7.56 192	8.46 215
DR100/DR7 poly	11.14 283	11.97 304	9.76 248	8.66 220	9.13 232	10.00 254

inlet/angle/metal junction box



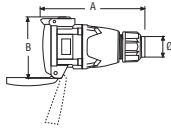
PRODUCT	A	B	CA	CP	D	E1	E2	H	PG	Ød
DR30	6.10 155	4.61 117	4.40 111.8	2.64 67	4.57 116	3.75 95.3	2.78 70.6	1.18 30	1.00 25	0.25 6.4
DR50	6.42 163	4.84 123	4.40 111.8	2.60 66	4.57 116	3.75 95.3	2.78 70.6	1.18 30	1.00 25	0.25 6.4
DR100/DR7	7.36 187	5.94 151	5.75 146	3.62 92	5.81 147.5	5.00 127	3.82 97	1.57 40	1.50 38	0.30 7.5
DR150	9.65 245	6.26 159	7.54 191.5	4.45 113	5.65 143.5	6.62 168.1	4.24 107.7	1.93 49	2.00 7.8	0.31 7.8
DR250 60°	11.10 282	8.90 226	8.94 227	5.12 130	7.32 186	8.25 209.6	6.38 162	2.05 52	2.50 64	0.33 8.4

Dimensions

Receptacle – Provided in inches and millimeters

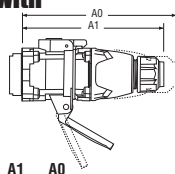
Dimensions are for reference only

connector



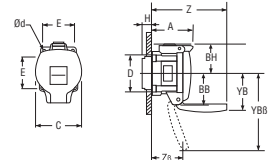
PRODUCT	A	B	Ø
DR30	6.30 160	3.74 95	.32-.90 8-23
DR50	6.50 165	4.25 108	.32-1.25 8-32
DR100/DR7	7.05 179	4.84 123	.55-1.53 14-39
DR150	8.94 227	5.71 145	1.00-1.75 25-45
DR250	11.46 291	6.57 167	1.50-2.25 40-58

receptacle with plug on/off



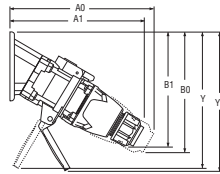
PRODUCT	A1	A0
DR30	6.54 166	7.17 182
DR50	6.85 174	7.48 190
DR100/DR7	7.76 197	8.70 221
DR150	9.69 246	10.83 275
DR250	12.20 310	13.43 341

receptacle



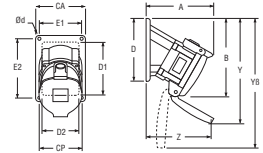
PRODUCT	A	BB	BH	C	D	E	H	YB	YBB	Z	ZB	Ød
DR30	2.56 64.9	1.97 50	1.77 45	2.72 69	2.28 58	1.89 48.1	0.59 15	2.56 65	4.25 108	4.75 120.6	2.99 75.9	0.20 5
DR50	2.70 68.6	2.15 54.5	2.11 53.5	3.15 80	2.76 70	2.17 55.1	0.83 21	3.94 100	5.20 132	4.76 121	2.26 57.5	0.20 5
DR100/DR7	3.00 76.2	2.46 62.5	2.36 60	3.86 98	3.15 80	2.59 65.8	1.06 27	4.33 110	5.98 152	5.76 146.2	3.41 86.7	0.22 5.5
DR150	4.45 113.1	2.95 75	2.76 70	4.45 113	3.94 100	3.20 81.3	0.94 24	5.39 137	7.76 197.1	7.76 197.1	0.24 6	
DR250	4.31 109.5	2.95 75	3.62 92	5.16 131	4.65 118	3.86 98	1.50 38	4.53 115	8.38 212.9	8.38 212.9	0.26 6.5	

30° inclined receptacle/angle with plug on/off



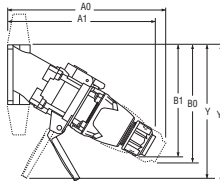
PRODUCT	A1	A0	B1	B0	Y	YB
DR30	7.56 192	8.11 206	6.69 170	7.01 178	7.24 184	7.80 198
DR50	7.99 203	8.54 217	7.01 178	7.32 186	8.27 210	8.27 210
DR100/DR7	9.02 229	9.84 250	8.35 212	8.82 224	10.00 254	10.28 261
DR150	11.89 302	12.87 327	9.53 242	10.12 257	11.77 299	
DR250 60°	11.50 292	12.13 308	13.66 347	14.72 374	11.54 293	

30° receptacle/angle



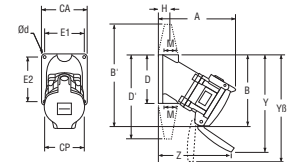
PRODUCT	A	B	CA	CP	D	D1	D2	E1	E2	Y	YB	Z	Ød
DR30	4.57 116	5.39 137	2.99 76	2.72 69	4.21 107	2.56 65	2.44 62	2.48 63	3.74 95	7.24 184	7.80 198	4.29 109	0.22 5.5
DR50	4.92 125	5.71 145	2.99 76	3.15 80	4.21 107	2.56 65	2.68 68	2.48 63	3.74 95	8.27 210	8.27 210	4.29 109	0.22 5.5
DR100/DR7	5.43 138	6.97 177	4.02 102	3.86 98	5.35 136	4.37 111	3.54 90	3.44 87.3	4.80 122	10.00 254	10.28 261	4.49 114	0.26 6.5
DR150	7.87 200	7.80 198	5.51 140	4.45 113	5.59 142	4.33 110	3.94 100	4.87 123.8	4.87 123.8	11.77 299	11.77 299	6.65 169	0.28 7
DR250 60°	8.78 223	9.80 249	7.20 183	5.16 131	7.20 183	5.91 150	5.91 150	6.50 165	6.50 165	14.96 380	14.96 380	3.78 96	0.28 7

30° inclined receptacle/conduit box with plug on/off



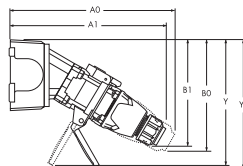
PRODUCT	A1	A0	B1	B0	Y	YB
DR30	8.31 211	8.86 225	6.34 161	6.65 169	6.89 175	7.44 189
DR50	9.13 232	9.69 246	7.24 184	7.56 192	8.50 216	8.50 216
DR100/DR7	11.14 283	11.97 304	8.66 220	9.13 232	10.31 262	10.59 269

30° receptacle/conduit box



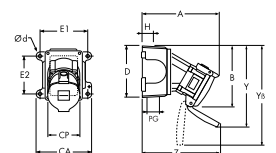
PRODUCT	A	B	CA	CP	D	E1	E2	H	PG	Y	YB	Z	Ød
DR30	5.31 135	5.04 128	3.31 84	2.72 69	3.31 84	2.76 70	2.76 70	0.69 17.5	0.50 12.5	6.89 175	7.44 189	5.04 128	0.24 6
DR50	6.06 154	5.94 151	3.50 89	3.15 80	3.94 100	3.03 77	3.46 88	0.94 24	0.75 19	8.50 216	8.50 216	5.08 129	0.26 6.5
DR100/DR7	7.56 192	7.28 185	4.13 105	3.86 98	5.04 128	3.50 89	4.41 112	1.22 31	1.25 31	10.31 262	10.59 269	6.61 168	0.30 7.5

30° inclined receptacle/angle/junction box with plug on/off



PRODUCT	A1	A0	B1	B0	Y	YB
DR30	10.04 255	10.59 269	6.81 173	7.13 181	7.36 187	7.91 201
DR50	10.47 266	11.02 280	7.13 181	7.44 189	8.39 213	8.39 213
DR100/DR7	12.09 307	12.91 328	8.54 217	9.02 229	10.20 259	10.47 266
DR150	15.51 394	16.50 419	9.53 242	10.12 257	11.77 299	
DR250 60°	15.67 398	16.30 414	13.66 347	14.72 374	11.54 293	

receptacle/angle/metal junction box



PRODUCT	A	B	CA	CP	D	E1	E2	H	PG	Y	YB	Z	Ød
DR30	7.05 179	5.51 140	4.40 111.8	2.72 69	4.57 116	3.75 95.3	2.78 70.6	1.18 30	1.00 187	7.36 201	7.91 201	6.77 172	0.25 6.4
DR50	7.40 188	5.83 148	4.40 111.8	3.15 80	4.57 116	3.75 95.3	2.78 70.6	1.18 30	1.00 213	8.39 213	8.39 213	6.77 172	0.25 6.4
DR100/DR7	8.50 216	7.17 182	5.75 146	3.86 98	5.81 147.5	5.00 127	3.82 97	3.82 40	1.57 40	10.20 259	10.47 266	7.56 192	0.30 7.5
DR150	11.50 292	7.80 198	7.54 191.5	4.45 113	5.65 143.5	6.62 168.1	4.24 107.7	1.93 49	2.00 299	11.77 299	11.77 299	10.28 261	0.31 7.8
DR250 60°	12.95 329	9.80 249	8.94 227	5.16 131	7.32 186	8.25 209.6	6.38 162	2.05 52	2.50 380	14.96 380	14.96 380	11.89 302	0.33 8.4