



DN9 Multipin – 20A Plugs & Receptacles

Ratings

- **Voltage**
50 VAC or 480 VAC Max
- **Amperage Rating**
20A Non-Current Interrupting
- **Environmental Ratings**
IP54/55
- **Temperature Range**
Min -40°F/Max 140°F
See pg 194 for temps below -15°F.
- **Wiring Capacity**
Min 16 AWG Max 10 AWG
- **Listings**
Contact Customer Service

Receptacle (female)



Don't forget to add installation accessories to your order

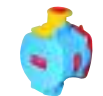
Inlet (male)



Voltage	Polarity	Part # Metal
50V	6P	19-14060
50V	7P	19-14070
50V	8P	19-14080
50V	9P	19-14090
480V	5P+E	19-14051
480V	6P+E	19-14061
480V	7P+E	19-14071
480V	8P+E	19-14081

Voltage	Polarity	Part # Metal
50V	6P	19-18060
50V	7P	19-18070
50V	8P	19-18080
50V	9P	19-18090
480V	5P+E	19-18051
480V	6P+E	19-18061
480V	7P+E	19-18071
480V	8P+E	19-18081

Main Options



Emergency Stop Pawl



Padlock Pawl



Self-Ejecting Devices

** Requires straight insertion receptacle or inlet and self-ejecting plug or connector*

Receptacle Options

Part

Straight Insertion	Recept # - A188
Self-Ejecting Connector Release	Recept # - 348-A188
HP Watertightness (high pressure)	Recept # - HP
Emergency Stop Pawl	Recept # - 375
Locking Mushroom Pawl	Recept # - 845
Padlock Pawl	Recept # - 843
Closed Lid Configuration	Recept # - NC

Inlet Options

Part

Self-Ejecting Plug Release	Inlet # - 338-A188
Straight Insertion	Inlet # - A188

See pgs 171-180 for detailed information on these options

DN9 Order Example:

To order Closed Lid Configuration on a receptacle add **-NC** to the part numbers.

DN9 Receptacle 9P=19-14090-**NC**

Appropriate accessory part numbers must also be included on the order.

Installation Accessories

Unless indicated otherwise, accessories can be used with either poly or metal plugs and receptacles

Handles



NPT	Poly Handle	Metal* Handle	Cable Range	Poly Handle w/Clamp & Bushing	Nylon Handle	Neoprene Handle	Poly Handle w/built in Draw Grips
1/2"	3PH12	3H12	.32 - 1.25	-	-	-	FH311-473
3/4"	3PH34	3H34	.38 - 1.12	-	-	31-311	-
1"	3PH1	3H1	.39 - 1.18	-	FH311	-	-
1 1/4"	3PH114	3H114	.750 - .875	3PM514	-	-	-
			.875 - 1.000	3PM516	-	-	-
			1.000 - 1.125	3PM518	-	-	-
			1.125 - 1.250	3PM520	-	-	-
			1.250 - 1.375	3PM522	-	-	-

Not NEMA 3R

Makes connector closures easier

- Notes:**
- Finger draw plates are recommended for easier connector closure on cord to cord assemblies.
 - For available cord grips, see pgs 167-168.
 - * For metal devices only

NPT Guidelines

Cable Range	NPT
.062 - .5	1/2"
.187 - .75	3/4"
.437 - 1.10	1"
.750 - 1.375	1 1/4"

NPT sizes are determined by the cable diameter and third party cord grip.

Angles



Metal 30° Angle	Metal 70° Angle	Metal Angle FS/FD Box 30°	Metal Straight Adapter
MA3	89-3A027	MAFS3	MS3

Junction Boxes



NPT	Metal Box	Metal Box Metal Angle 30°
1/2"	MB312	39-3A053-080-12
3/4"	MB334	39-3A053-080-34
1"	MB31	39-3A053-080-1
1 1/4"	MB3114	39-3A053-080-114

Miscellaneous Accessories



* Set of Two (2)

For Male Devices Only

Finger Drawplates	Protective Neoprene Cap	Cord Grip with Mesh
FDP3	DN16R	see pgs 167-168

* Recommended for cord to cord assembly applications, for easier connector closure

Order Example

A typical order should include an inlet part number, a receptacle part number **AND** the matching handles, angles or other required accessories.



Male Inlet with Handle (Plug)
19-18060 + FH311



Female Receptacle with Angle Adapter
19-14060 + MA3



DN20 Multipin – 20A Plugs & Receptacles

Ratings

- Voltage**
50 VAC or 480 VAC Max
- Amperage Rating**
20A Non-Current Interrupting*
* The amperage rating is 15A when more than 12 contacts are used for power circuits (not control).
- Environmental Ratings**
IP54/55
- Temperature Range**
Min -40°F/Max 140°F
See pg 194 for temps below -15°F.
- Wiring Capacity**
Min 16 AWG Max 10 AWG
- Listings**
Contact Customer Service

Receptacle (female)



Don't forget to add installation accessories to your order

Inlet (male)



Voltage	Polarity	Part # Metal
50V	10P	19-64100
50V	11P	19-64110
50V	12P	19-64120
50V	13P	19-64130*
50V	14P	19-64140*
50V	15P	19-64150*
50V	16P	19-64160*
50V	17P	19-64170*
50V	18P	19-64180*
50V	19P	19-64190*
50V	20P	19-64200*
480V	9P+E	19-64091
480V	10P+E	19-64101
480V	11P+E	19-64111
480V	12P+E	19-64121
480V	13P+E	19-64131*
480V	14P+E	19-64141*
480V	15P+E	19-64151*
480V	16P+E	19-64161*
480V	17P+E	19-64171*
480V	18P+E	19-64181*
480V	19P+E	19-64191*

Voltage	Polarity	Part # Metal
50V	10P	19-68100
50V	11P	19-68110
50V	12P	19-68120
50V	13P	19-68130*
50V	14P	19-68140*
50V	15P	19-68150*
50V	16P	19-68160*
50V	17P	19-68170*
50V	18P	19-68180*
50V	19P	19-68190*
50V	20P	19-68200*
480V	9P+E	19-68091
480V	10P+E	19-68101
480V	11P+E	19-68111
480V	12P+E	19-68121
480V	13P+E	19-68131*
480V	14P+E	19-68141*
480V	15P+E	19-68151*
480V	16P+E	19-68161*
480V	17P+E	19-68171*
480V	18P+E	19-68181*
480V	19P+E	19-68191*

Main Options



Emergency Stop Pawl



Self-Ejecting Devices

* Requires straight insertion receptacle or inlet and self-ejecting plug or connector

See pgs 171-180 for detailed information on these options

Receptacle Options

Part

Straight Insertion	Recept # - A188
Self-Ejecting Connector Release	Recept # - 348-A188
HP Watertightness (high pressure)	Recept # - HP
Emergency Stop Pawl	Recept # - 375
Locking Mushroom Pawl	Recept # - 845
Padlock Pawl	Recept # - 843
Closed Lid Configuration	Recept # - NC

Inlet Options

Part

Self-Ejecting Plug Release	Inlet # - 338-A188
Straight Insertion	Inlet # - A188

DN20 Order Example:

To order Closed Lid Configuration on a receptacle add **-NC** to the receptacle part numbers.

DN20 Receptacle 19P=19-64190-**NC**

Appropriate accessory part numbers must also be included on the order.

Installation Accessories

Unless indicated otherwise, accessories can be used with either poly or metal plugs and receptacles

Handles



IP 66/67

NPT	Poly Handle	Metal* Handle
3/4"	9PH34	9H34
1"	9PH1	9H1
1 1/4"	9PH114	9H114
1 1/2"	9PH112	9H112
2"	9PH2	9H2

Cable Range	Poly Handle w/Clamp & Bushing	Santoprene™ Handle
.70 - 1.00	–	65-9A013-D25
1.00 - 1.375	–	65-9A013-D35
1.250 - 1.375	9PM622	–
1.375 - 1.750	–	65-9A013-D45
1.438 - 1.562	9PM625	–
1.562 - 1.688	9PM627	–
1.688 - 1.812	9PM629	–

Notes: • For available cord grips, see pgs 167-168.
* For metal devices only

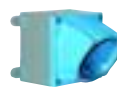
NPT Guidelines

Angles



Metal 30° Angle	Metal 70° Angle	Metal Straight Adapter
MA10	89-9A027	MS10

Junction Boxes



NPT	Metal Box	Metal Box Metal Angle 30°
1 1/4"	MB10114	39-9A053-080-114
1 1/2"	MB10112	39-9A053-080-112
2"	MB102	39-9A053-080-2
2 1/2"	MB10212	39-9A053-080-212

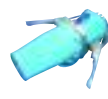
Cable Range	NPT
.062 - .5	1/2"
.187 - .75	3/4"
.437 - 1.10	1"
.750 - 1.375	1 1/4"
.890 - 1.650	1 1/2"
1.125 - 2.438	2"
1.750 - 2.565	2 1/2"

NPT sizes are determined by the cable diameter and third party cord grip.

Miscellaneous Accessories



For Male Devices Only



Protective Neoprene Cap	Removable Draw Bar Complete Kit *	1 Draw Bar	1 Plate	Permanently Attached Complete Kit **	1 Draw Bar 1 Attached Plate	1 Plate
DN63R	NT100	NT110	NT120	39-9A486	39-9A024-486	39-9A014-486

* Consists of 1 Draw Bar and 2 Plates

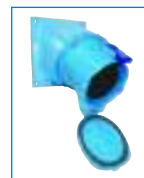
** Consists of 1 Draw Bar with Attached Plate and 1 additional Plate

Order Example

A typical order should include an inlet part number, a receptacle part number **AND** the matching handles, angles or other required accessories.



Male Inlet with Handle (Plug)
19-68200 + 31-911



Female Receptacle with Angle Adapter
19-64200 + MA10



DN7 Multipin – 50-150A Plugs & Receptacles

Ratings

- Voltage**
480 VAC Max
- Amperage Rating**
50A Non-Current Interrupting
90A Non-Current Interrupting
150A Non-Current Interrupting
- Environmental Ratings**
IP54/55
- Temperature Range**
Min -40°F/Max 140°F
See pg 194 for temps below -15°F.
- Wiring Capacity**
50A Min 10 AWG Max 6 AWG
90A Min 6 AWG Max 2 AWG
150A Min 6 AWG max 2 AWG
- Listings**
Contact Customer Service

Receptacle (female)



Don't forget to add installation accessories to your order

Inlet (male)



Voltage	Polarity	Amperage	Part # Metal
480V	6P+E	50A	19-34061
480V	6P+E	90A	19-64061
480V	6P+E	150A	39-94061

Voltage	Polarity	Amperage	Part # Metal
480V	6P+E	50A	19-38061
480V	6P+E	90A	19-68061
480V	6P+E	150A	39-98061

Main Options



Emergency Stop Pawl

Padlock Pawl

Receptacle Options

Part

HP Watertightness (high pressure)	Recept # - HP
Emergency Stop Pawl	Recept # - 375
Locking Mushroom Pawl	Recept # - 845
Padlock Pawl	Recept # - 843
Closed Lid Configuration	Recept # - NC

Inlet Options

Part

With No Lockout Hole	Inlet # - A155
----------------------	----------------

DN7 Order Example:

To order a device with an Emergency Stop Pawl add **-375** to the receptacle part number

DN7 90A = 19-64061-375

See pgs 171-180 for detailed information on these options

Installation Accessories

Miscellaneous Accessories



* Set of Two (2)



For Male Devices Only



Amp	Finger Drawplates	Protective Neoprene Cap	Removable Draw Bar Complete Kit **	1 Draw Bar	1 Plate	Permanently Attached Complete Kit ***	1 Draw Bar 1 Attached Plate	1 Plate
50A	FDP6	-	-	-	-	-	-	-
90A	-	DN63R	NT100	NT110	NT120	39-9A486	39-9A024-486	39-9A014-486
150A	-	31-2A126	NT200	NT210	NT220	39-2A486	39-2A024-486	39-2A014-486

* Recommended for cord to cord assembly applications, for easier connector closure

** Consists of 1 Draw Bar and 2 Plates

*** Consists of 1 Draw Bar with Attached Plate and 1 additional Plate

Installation Accessories

Unless indicated otherwise, accessories can be used with either poly or metal plugs and receptacles

Handles



NPT	Poly Handle			Metal Handle*		
	50A	90A	150A	50A	90A	150A
1/2"	6PH12	-	-	6H12	-	-
3/4"	6PH34	9PH34	-	6H34	9H34	-
1"	6PH1	9PH1	-	6H1	9H1	2H1
1 1/4"	6PH114	9PH114	-	6H114	9H114	2H114
1 1/2"	6PH112	9PH112	2PH112	6H112	9H112	2H112
2"	-	9PH2	2PH2	-	9H2	2H2
2 1/2"	-	-	2PH212	-	-	2H212



Cable Range	Poly Handle w/Clamp & Bushing		Nylon Handle 50A	Neoprene Handle	Santoprene™ Handle	Poly Handle w/built in Draw Grips 50A
	50A	90A				
.50 - 1.25	-	-	-	31-611 (50A)	-	-
.51 - 1.38	-	-	FH611	-	-	FH611-473 (50A)
.70 - 1.00	-	-	-	-	65-9A013-D25	-
1.00 - 1.375	-	-	-	-	65-9A013-D35	-
1.250 - 1.375	6PM622	9PM622	-	-	-	-
1.375 - 1.750	-	-	-	-	65-9A013-D45	-
1.438 - 1.562	6PM625	9PM625	-	-	-	-
1.500 - 2.250	-	-	-	31-211 (150A)	-	-
1.562 - 1.688	6PM627	9PM627	-	-	-	-
1.688 - 1.812	6PM629	9PM629	-	-	-	-

Not NEMA 3R

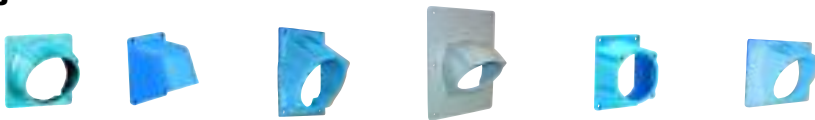
IP 66/67

Makes connector closures easier

Notes: • Finger draw plates are recommended for easier connector closure on cord to cord assemblies.
• For available cord grips, see pgs 167-168.
* For metal devices only

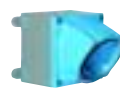
• For a guideline of NPT sizes based on cable ranges, see DN20 pg 108.

Angles



Amp	Metal 30° Angle	Metal 70° Angle	Metal Angle Oversized 30°	Metal Angle Oversized 45°	Metal Straight Adapter	Metal Lateral Angle 30°
50A	MA6	89-6A027	MA660	-	MS6	MAB6
90A	MA10	89-9A027	MA110	-	MS10	-
150A	MA20	-	-	MA220	MS20	-

Junction Boxes



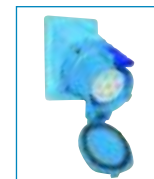
NPT	Metal Box			Metal Box with Metal Angle 30°		
	50A	90A	150A	50A	90A	150A
1"	MB61	-	-	39-6A053-080-1	-	-
1 1/4"	MB6114	MB10114	-	39-6A053-080-114	39-9A053-080-114	-
1 1/2"	MB6112	MB10112	MB20112	39-6A053-080-112	39-9A053-080-112	39-2A053-080-112
2"	MB62	MB102	MB202	39-6A053-080-2	39-9A053-080-2	39-2A053-080-2
2 1/2"	-	MB10212	MB20212	-	39-9A053-080-212	39-2A053-080-212
Oversized	-	-	MB22212	-	-	39-2A053-080-2210

Order Example

A typical order should include an inlet part number, a receptacle part number **AND** the matching handles, angles or other required accessories.



Male Inlet with Handle (Plug)
19-38061 + 6PH34



Female Receptacle with Angle Adapter
19-34061 + MA6