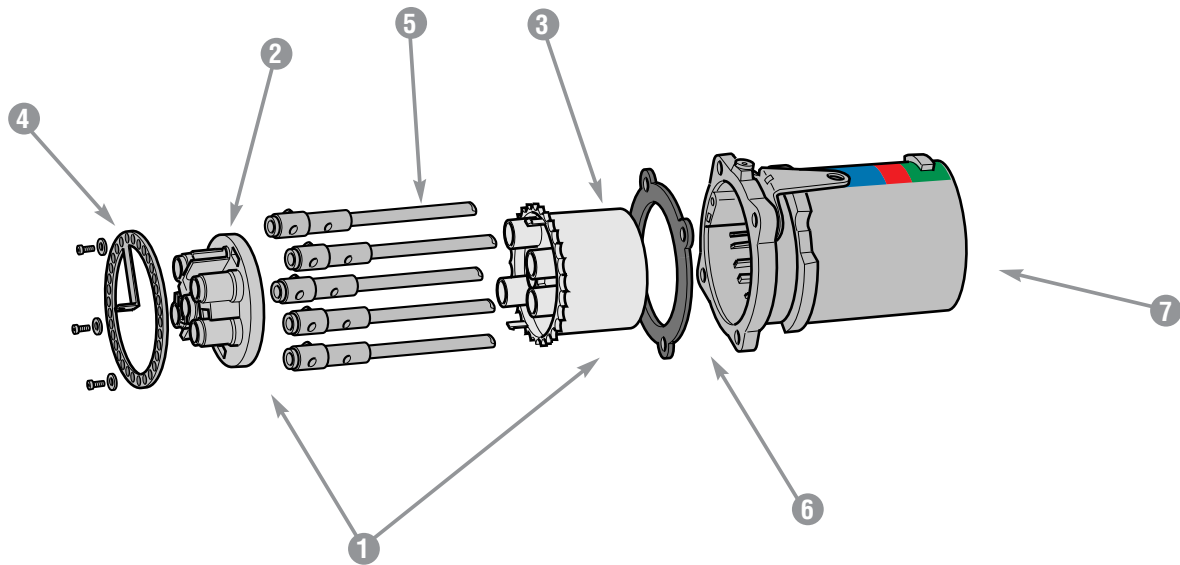




Spare Parts Male Configuration

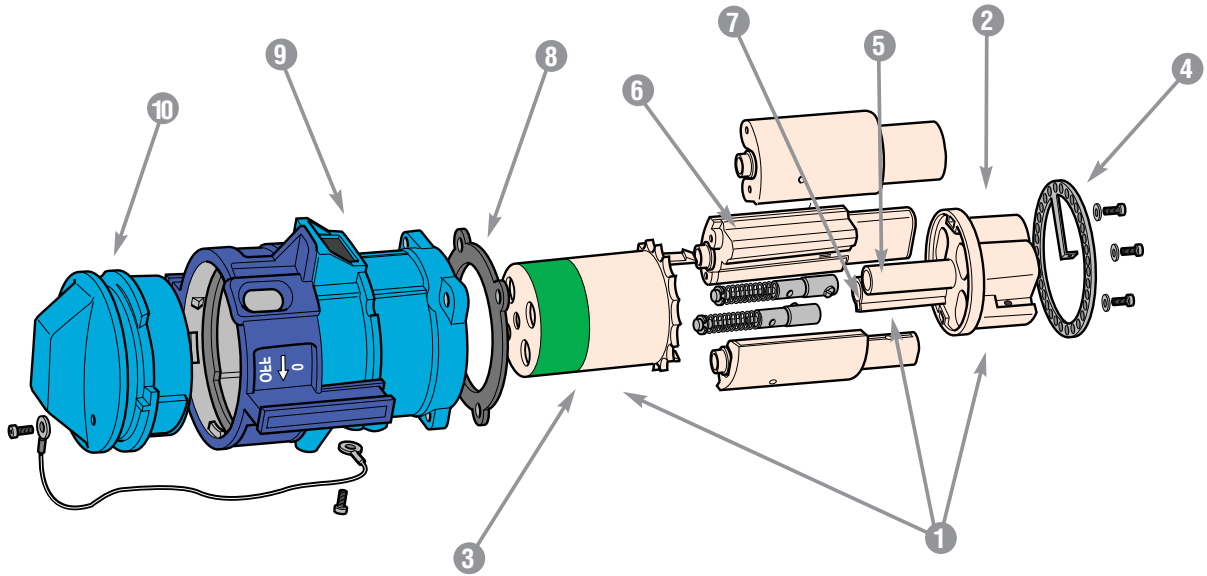


	DB30 METAL	DB60 METAL	DB100 METAL
① = Plug Interior with Pilot Contact Assembly	89-3A010-172*	89-6A010-172*	89-9A010-174*
① = Plug Interior without Pilot Contact Assembly	89-3A010*	89-6A010*	89-9A010*
② = Interior Bottom	89-3A010-B	89-6A010-B	89-9A010-B
③ = Interior Top for Pilot Contact Assembly	89-3A010-T-172*	89-6A010-T-172*	89-9A010-T-174*
③ = Interior Top without Pilot Contact Assembly Holes	89-3A010-T*	89-6A010-T*	89-9A010-T*
④ = Metal Locking Ring/Ground Ring	89-3A523	89-6A523	89-9A523
⑤ = Ground Contact	89-3A019	89-6A019	89-9A019
⑤ = Phase or Neutral Contact	89-3A011	89-6A011	89-9A011
⑤ = Pilot (2 Contacts) Assembly	89-3A219-172	89-6A219-172	-
⑤ = Pilot (4 Contacts) Assembly	-	-	89-9A219-174
⑥ = Device Gasket	89-3A026	89-6A026	89-9A026
⑦ = Plug Metal Casing	89-3A014**	89-6A014**	89-9A014**

* Voltage and phasing positions must be specified (5th, 6th & 7th digit of Part #) to duplicate your shutter and alignment notches.

** For appropriate labeling on a device, please specify voltage, phasing, and product type.

Spare Parts Female Configuration



	DB30 METAL	DB60 METAL	DB100 METAL
① = Receptacle Interior with Pilot Contact Assembly	89-3A020-172*	89-6A020-172*	89-9A020-174*
① = Receptacle Interior without Pilot Contact Assembly	89-3A020*	89-6A020*	89-9A020*
② = Interior Bottom	89-3A020-B	89-6A020-B	89-9A020-B
③ = Interior Top for Pilot Contact Assembly	89-3A020-T-172*	89-6A020-T-172*	89-9A020-T-174*
③ = Interior Top without Pilot Contact Assembly Holes	89-3A020-T*	89-6A020-T*	89-9A020-T*
④ = Metal Locking Ring/Ground Ring	89-3A523	89-6A523	89-9A523
⑤ = Ground Contact	89-3A029	89-6A029	89-9A029
⑥ = Phase Contact	89-3A021	89-6A021	89-9A021
⑦ = Neutral Contact	89-3A021N	89-6A021N	89-9A021N
⑦ = Pilot (2 Contacts) Assembly	89-3A229-172	89-6A229-172	-
⑦ = Pilot (4 Contacts) Assembly	-	-	89-9A229-174
⑧ = Device Gasket	89-3A026	89-6A026	89-9A026
⑨ = Receptacle Metal Casing	89-3A024**	89-6A024**	89-9A024**
⑩ = Protective Cap with Nylon Cord	89-3A925**	89-6A925**	89-9A925**

* Voltage and phasing positions must be specified (5th, 6th & 7th digit of Part #) to duplicate your shutter and alignment notches.

** For appropriate labeling on a device, please specify voltage, phasing, and product type

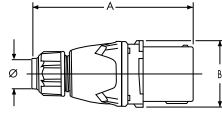


Dimensions

Inlet – Provided in inches and millimeters

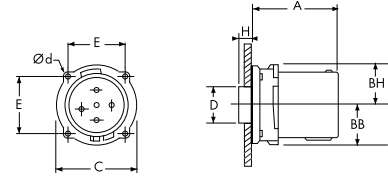
Dimensions are for reference only

Plug



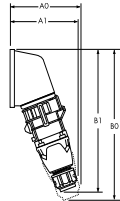
PRODUCT	A	B	Ø
	7.6	3.11	.32-1.25
DB30	193	79	8-32
	7.95	3.9	.55-1.53
DB60	202	99	14-39
	12.01	4.33	1.25-1.812
DB100	305	110	32-46

Inlet



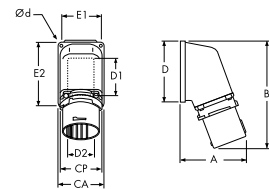
PRODUCT	A	BB	BH	C	D	E	H	Ød
	3.82	1.5	1.61	3.07	2.17	2.17	0.71	0.18
DB30	97	38	41	78	55	55.1	18	4.5
	3.9	1.77	2.13	3.58	2.68	2.59	0.83	0.22
DB60	99	45	54	91	68	65.8	21	5.5
	4.74	2.09	2.24	4.53	3.35	3.2	1.61	0.22
DB100	120.4	53	57	115	85	81.3	41	5.5

70° inclined inlet/angle with connector on/off



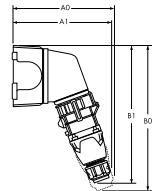
PRODUCT	A1	A0	B1	B0
	6.02	6.57	11.54	12.99
DB30	153	167	293	330
	6.85	7.36	13.46	14.88
DB60	174	187	342	378
	8.62	9.41	17.60	19.80
DB100	219	239	447	503

70° inlet/angle



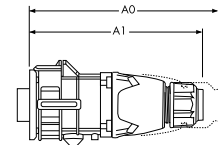
PRODUCT	A	B	CA	CP	D	D1	D2	E1	E2	Ød
	4.61	7.28	3.03	3.07	4.17	3.15	2.56	2.48	3.74	0.22
DB30	117	185	77	78	106	80	65	63	95	5.5
	5.35	8.74	4.02	3.58	5.35	4.53	3.15	3.44	4.8	0.26
DB60	136	222	102	91	136	115	80	87.3	122	6.5
	6.42	9.88	5.51	5.75	5.51	4.92	3.94	4.87	4.87	0.26
DB100	163	251	140	146	140	125	100	123.8	123.8	6.5

70° inclined inlet/angle/junction box with connector on/off



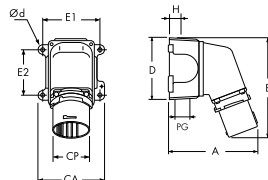
PRODUCT	A1	A0	B1	B0
	8.54	9.06	11.65	13.15
DB30	217	230	296	334
	9.96	10.47	13.66	15.08
DB60	253	266	347	383
	12.24	13.03	17.60	19.80
DB100	311	331	447	503

inlet with connector on/off



PRODUCT	A1	A0
	8.39	9.96
DB30	213	253
	9.02	10.51
DB60	229	267
	13.23	15.59
DB100	336	396

70° surface inlet/angle/metal junction box



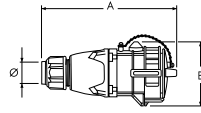
PRODUCT	A	B	CA	CP	D	E1	E2	H	PG	Ød
	7.09	7.4	4.33	3.07	4.61	3.70	2.78	1.18	0.83	0.25
DB30	180	188	110	78	117	94	70.6	30	21	6.4
	8.43	8.94	5.71	3.58	5.71	4.92	3.82	1.57	1.14	0.31
DB60	214	227	145	91	145	125	97	40	29	7.8
	10.04	9.88	7.48	5.75	5.51	6.69	4.24	1.93	1.42	0.31
DB100	255	251	190	146	140	170	107.7	49	36	7.8

Dimensions

Receptacle – Provided in inches and millimeters

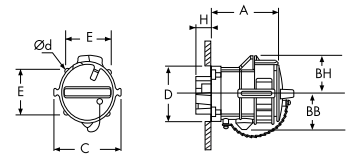
Dimensions are for reference only

connector



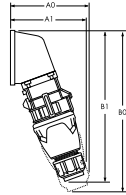
PRODUCT	A	B	Ø
	7.99	3.54	.32-1.25
DB30	203	90	8-32
	8.82	4.02	.55-1.53
DB60	224	102	14-39
	12.56	4.92	1.25-1.812
DB100	319	125	32-46

receptacle



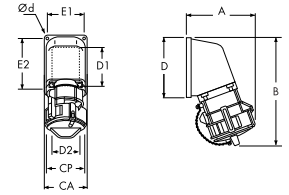
PRODUCT	A	BB	BH	C	D	E	H	Ød
	4.21	1.77	1.77	4.33	2.17	2.17	1.02	0.18
DB30	106.9	45	45	110	55	55.1	26	4.5
	4.75	2.01	2.01	4.88	2.68	2.59	1.26	0.22
DB60	120.7	51	51	124	68	65.8	32	5.5
	5.28	2.46	2.46	5.75	3.35	3.20	1.65	0.22
DB100	134.2	62.5	62.5	146	85	81.3	42	5.5

70° inclined receptacle/angle with plug on/off



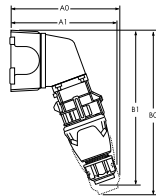
PRODUCT	A1	A0	B1	B0
	6.02	6.57	11.54	12.99
DB30	153	167	293	330
	6.85	7.36	13.46	14.88
DB60	174	187	342	378
	8.62	9.41	17.60	19.80
DB100	219	239	447	503

70° receptacle/angle



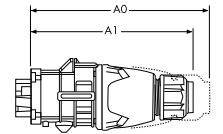
PRODUCT	A	B	CA	CP	D	D1	D2	E1	E2	Ød
	5.24	7.83	3.03	4.33	4.17	3.15	2.56	2.48	3.74	0.22
DB30	133	199	77	110	106	80	65	63	95	5.5
	6.10	9.72	4.02	4.88	5.35	4.53	3.15	3.44	4.80	0.26
DB60	155	247	102	124	136	115	80	87.3	122	6.5
	7.13	10.55	5.51	5.75	5.51	4.92	3.94	4.87	4.87	0.26
DB100	181	268	140	146	140	125	100	123.8	123.8	6.5

70° inclined receptacle/angle junction box with plug on/off



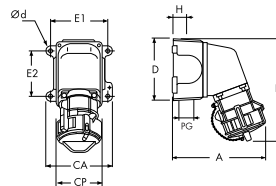
PRODUCT	A1	A0	B1	B0
	8.54	9.06	11.65	13.15
DB30	217	230	296	334
	9.96	10.47	13.66	15.08
DB60	253	266	347	383
	12.24	13.03	17.60	19.80
DB100	311	331	447	503

receptacle with plug on/off



PRODUCT	A1	A0
	8.39	9.96
DB30	213	253
	9.02	10.51
DB60	229	267
	13.23	15.59
DB100	336	396

70° receptacle/angle metal junction box



PRODUCT	A	B	CA	CP	D	E1	E2	H	PG	Ød
	7.72	7.95	3.31	4.33	4.61	3.70	2.78	1.18	0.83	0.25
DB30	196	202	84	110	117	94	70.6	30	21	6.4
	9.21	9.92	4.49	4.88	5.71	4.92	3.82	1.57	1.14	0.31
DB60	234	252	114	124	145	125	97	40	29	7.8
	10.75	10.55	5.51	5.75	5.51	6.69	4.24	1.93	1.42	0.31
DB100	273	268	140	146	140	170	107.7	49	36	7.8