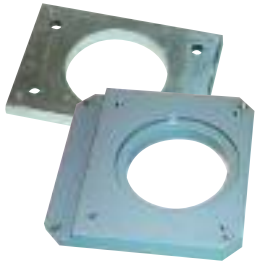
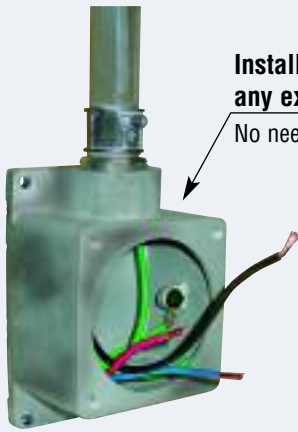




Adapter Plates



Updating your facility with Decontactor™ Series plugs and receptacles is simple and affordable with Meltric's adapter plates. They allow the mounting of Decontactors to existing boxes previously used for competitive devices. This avoids the cost and hassle of installing new boxes and performing associated re-piping and rewiring. If an adapter plate for the box you have is not listed, contact customer service and Meltric will design a new one to fit your application.



Install Decontactors on virtually any existing back box

No need to bend conduit or pull wires



Meltric Adapter Plates

Available for hundreds of competitive wall boxes



Meltric Receptacle

Meltric Part #	Meltric Devices	Description	Part Numbers Adapted to:		Meltric Part #	Meltric Devices	Description	Part Numbers Adapted to:	
			APPLETON CROUSE-HINDS					APPLETON CROUSE-HINDS	
CHARE36	DS30/DSN60 Recp/Inlet	<i>Appleton and Crouse-Hinds</i>	AEE36	ARE36					ARJG56
	DS(N)37 Recp/Inlet		AEE46	ARE46					AR60
			AEE56	ARE56					AR610
			AERH36	ARRH36					AJ37
			AERH46	ARRH46					AJ47
			AERH56	ARRH56					AJ57
			AERC36	ARRC36					AJ67
			AERC46	ARRC46					AJA6
			AERC56	ARRC56					
			AERA36	ARD36	CHARE56	DS60 Recp/Inlet	<i>Appleton and Crouse-Hinds</i>	AEE36	ARE36
			AERA46	ARD46		DS100C Recp/Inlet		AEE46	ARE46
			AERA56	ARD56				AEE56	ARE56
			AJA310	ARJ36				AERH36	ARRH36
			AJA410	ARJ46				AERH46	ARRH46
			AJA510	ARJ56				AERH56	ARRH56
			AJA610	ARJG36				AERC36	ARRC36
			AJ100	ARJG46				AERC46	ARRC46

Meltric Part #	Meltric Devices	Description	Part Numbers Adapted to:		Meltric Part #	Meltric Devices	Description	Part Numbers Adapted to:			
			APPLETON CROUSE-HINDS					APPLETON CROUSE-HINDS			
CHARE56	DS60 Recp/Inlet	<i>Appleton and Crouse-Hinds</i>	AERC56	ARRC56	CHARE23	DS20/DSN30 Recp/Inlet	<i>Appleton and Crouse-Hinds</i>		ARJ23		
			DS100C Recp/Inlet	AERA36				ARD36		ARJ33	
		AERA46	ARD46			ARJG13					
		AERA56	ARD56			ARJG23					
		AJA310	ARJ36			ARJG33					
		AJA410	ARJ46								
		AJA510	ARJ56			APPLETON CROUSE-HINDS					
		AJA610	ARJG36	CHARE33		DS30/DSN60 Recp/Inlet	<i>Appleton and Crouse-Hinds</i>	AEE13	ARE13		
		AJ100	ARJG46			DS(N)37 Recp/Inlet		AEE23	ARE23		
			ARJG56					AEE33	ARE33		
			AR60					AERH13	ARRC13		
			AR610					AERH23	ARRC23		
			AJ37					AERH33	ARRC33		
			AJ47					AERC13	ARRH13		
			AJ57					AERC23	ARRH23		
			AJ67					AERC33	ARRH33		
		AJA6				AERA13	ARD13				
						AERA23	ARD23				
						AERA33	ARD33				
			APPLETON CROUSE-HINDS				AR30				
AJA100	DS100 Recp/Inlet	<i>Appleton and Crouse-Hinds</i>	AJA310	AR610				ARJ13			
			AJA410	AJ37				ARJ23			
			AJA510	AJ47				ARJ33			
			AJA610	AJ57				ARJG13			
			AJ100	AJ67				ARJG23			
				AJC37				ARJG33			
				AJC47							
				AJC57				APPLETON CROUSE-HINDS			
				AJC67			CHAJ56-MA6	MP6	<i>Appleton and Crouse-Hinds</i>	AJA310	AJ37
				AJA6				MA6	<i>without angle adapter</i>	AJA410	AJ47
					MS6		AJA510	AJ57			
							AJA610	AJ67			
			APPLETON CROUSE-HINDS								
CHARE23	DS20/DSN30 Recp/Inlet	<i>Appleton and Crouse-Hinds</i>	AEE13	ARE13	CHFDADAPLT	09-20000-027-80	<i>FS or FD Single Gang Box</i>				
			DS(N)24 Recp/Inlet	AEE23				ARE23		MSPN	
		AEE33	ARE33			MP2					
		AERH13	ARRC13			MP3					
		AERH23	ARRC23			MA2					
		AERH33	ARRC33			MA3					
		AERC13	ARRH13			MS2					
		AERC23	ARRH23			MS3					
		AERC33	ARRH33			MA2-SS					
		AERA13	ARD13			MA3-SS					
		AERA23	ARD23								
		AERA33	ARD33								
			AR30								
		ARJ13									
					E462	61-10000-027	<i>FS or FD Single Gang Box</i>				
								RUSSELL STOLL			
					DSN6JAA6	DSN60 Recp/Inlet	<i>Russell Stoll boxes</i>	JAA6-AB6			

Adapter Plates



Adapter Plates

Meltric Part #	Meltric Devices	Description	Part Numbers Adapted to:	Meltric Part #	Meltric Devices	Description	Part Numbers Adapted to:		
			RUSSELL STOLL				HUBBELL		
DSN6JAA6	DSN60 Recp/Inlet	<i>Russell Stoll boxes</i>	JAA6-45	HBL26401	DS30/DSN60 Recp/Inlet	<i>Hubbell / 60/100A Boxes</i>	BB1002W		
			JRAA-AB6			<i>60/100A Boxes</i>	FW60100		
			JE6			HBL26401A	DS3/DSN6 Angle Adapter	<i>Hubbell / 60/100A Boxes</i>	26401
			JAA66			HBL4200	DS200 Receptacle	<i>Hubbell 200A Boxes</i>	4200
			RUSSELL STOLL	HBB26401	DS60 Adapters	<i>Hubbell / 60/100A Boxes</i>	26401		
JRF60	DS60 Recp/Inlet	<i>Russell Stoll boxes</i>	JAA6-AB6	HH50	DS30/DSN60 Recp/Inlet	<i>Hubbelllock / 60A adapters</i>	26402		
	DS100C Recp/Inlet		JAA6-45			<i>60A adapters</i>	26404		
			JRAA-AB6			PNFS	PN/DSN20 Recp/Inlet	<i>FS or FD Single Gang Box</i>	
			JE6						
			JAA66				PYLE-NATIONAL		
PNFS-DSN1-SS	PN/DSN2 Recp/Inlet	<i>FS or FD Single Gang Box</i>		PNFSPL	DS60 Recp/Inlet	<i>Pyle-National / 60A Boxes</i>	JR-26046-A		
PNFS-DSN3-SS	DS/DSN3 Recp/Inlet	<i>FS or FD Single Gang Box</i>			DS100C Recp/Inlet	<i>60A Boxes</i>	JR-36046-A		
			HUBBELL				JR-46046-A		
HH312	MA6	<i>Hubbell / 60/100A Boxes</i>	26401				JR-56046-A		
			BB601W				JR-336046-C		
			BB602W				JR-446046-C		
			BB1001W				JR-556046-C		
			BB1002W				JR-26046-BB		
			FW60100				PYLE-NATIONAL		
			HUBBELL				JR-36046-BB		
HH312-E448	DS60 Recp/Inlet	<i>Hubbell / 60/100A Boxes</i>	26401				JR-46046-BB		
	DS100C Recp/Inlet		BB601W				JR-56046-BB		
			BB602W				JR-36046-BE		
			BB1001W				JR-46046-BE		
			BB1002W				JR-56046-BE		
			FW60100				JR-46046-CE		
							JR-56046-CE		
			KILLARK				JR-60-J		
HH60K	DS60 Recp/Inlet	<i>Hubbell-Killark</i>	AJAE				JR-64-D		
	DS100C Recp/Inlet	<i>Hazardous Duty Box</i>	AJAC				PYLE-NATIONAL		
			AJAT	PNJRB30	09-20000-027-80	<i>Pyle-National</i>	JRW-13046-A		
MAFS6BA	MA6	<i>FS or FD Single Gang Box</i>			MSPN	<i>20/30A Boxes</i>	JRW-23046-A		
	MP6				MP2		JRW-33046-A		
	MS6				MP3		JRW-113046-C		
			HUBBELL		MA2		JRW-223046-C		
HHBB201W	DS1/DSN3 Recp/Inlet	<i>Hubbell / 20/30A Boxes</i>	BB201W		MA3		JRW-333046-C		
			BB301W		MS2		JR-13046-BB		
			FT202W		MS3		JR-23046-BB		
			FT302W				JR-33046-BB		
			HUBBELL				JR-43046-BB		
HBL26401	DS30/DSN60 Recp/Inlet	<i>Hubbell / 60/100A Boxes</i>	26401				JRW-13046-BE		
			BB601W				JRW-23046-BE		
			BB602W				JRW-33046-BE		
			BB1001W				JR-23046-CE		

Meltric Part #	Meltric Devices	Description	Part Numbers Adapted to:	Meltric Part #	Meltric Devices	Description	Part Numbers Adapted to:
PNJRBB30			PYLE-NATIONAL JR-33046-CE JR-62-CP				
			PYLE-NATIONAL				
PLN30	09-20000-027-80	<i>Pyle-National / 60A Boxes</i>	JR-26046-A				
	MSPN		JR-36046-A				
	MP2		JR-46046-A				
	MP3		JR-56046-A				
	MA2		JR-336046-C				
	MA3		JR-446046-C				
	MS2		JR-556046-C				
	MS3		JR-26046-BB				
			JR-36046-BB				
			JR-46046-BB				
			JR-56046-BB				
			JR-36046-BE				
			JR-46046-BE				
			JR-56046-BE				
			JR-46046-CE				
			JR-56046-CE				
			JR-60-F				
			JR-64-D				
			PYLE-NATIONAL				
PLN60	MP6	<i>Pyle-National / 60A Boxes</i>	JR-26046-A				
	MA6		JR-36046-A				
	MS6		JR-46046-A				
			JR-56046-A				
			JR-336046-C				
			JR-446046-C				
			JR-556046-C				
			JR-26046-BB				
			JR-36046-BB				
			JR-46046-BB				
			JR-56046-BB				
			JR-36046-BE				
			JR-46046-BE				
			JR-56046-BE				
			JR-46046-CE				
			JR-56046-CE				
			JR-60-F				
			JR-64-D				