

# DR

Features and Ratings	p. 130
DR30	p. 131
DR50	p. 133
DR100	p. 135
DR150	p. 137
DR 250	p. 139
Spare parts	p. 141
Dimensions	p. 143



## Robust construction and high amperage capabilities

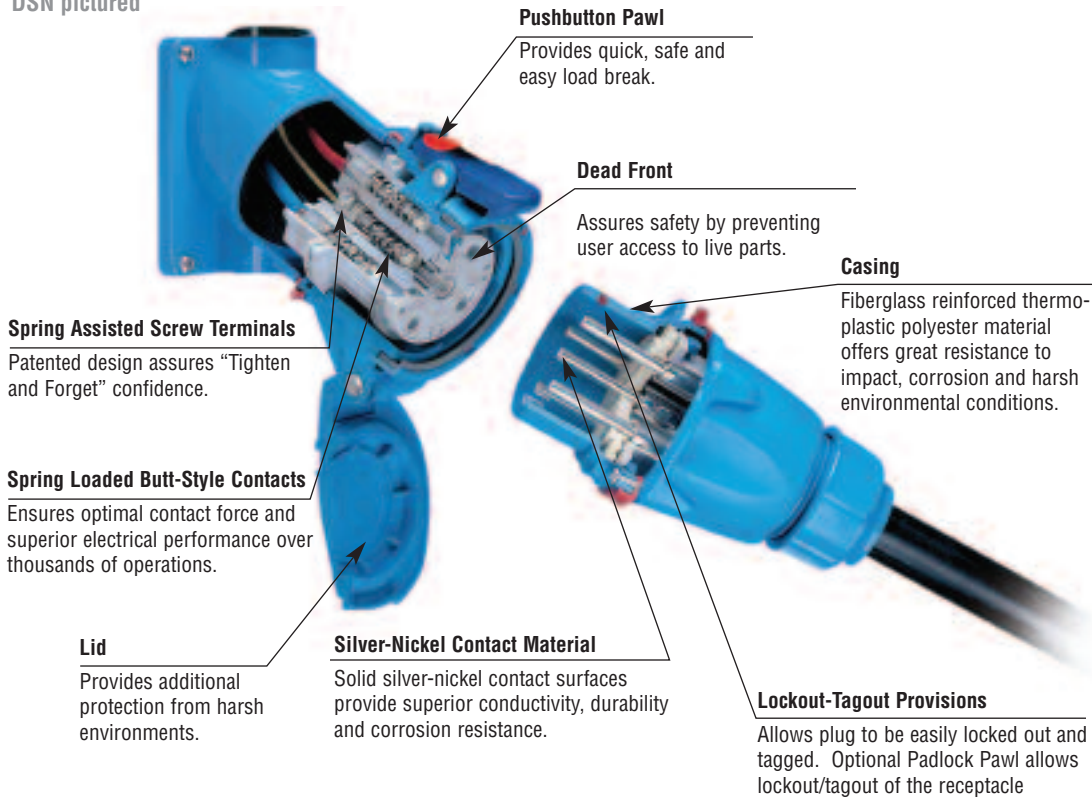
DR series plugs and receptacles provide safe, economical and robust connections for applications up to 250A. Some DR models are non-current interrupting rated, while others are suitable for current interruption on resistive loads (see table on next page). The DR's spring-loaded, silver-nickel butt contacts and dead front construction provide more consistent and reliable connections and significant improvements in operator safety compared to competitive devices.

### Main Advantages

- ▼ High amperage capacity
- ▼ Up to 5 auxiliary contacts
- ▼ Robust Metal or Poly construction

# Product Features

DSN pictured



## General Ratings

<b>Amperage</b>	30 to 250A
<b>Voltage</b>	600 VAC, 250 VDC Max
<b>Frequency</b>	50-400 Hz
<b>Short-Circuit (Withstand)</b>	10kA to 100kA*
<b>Environmental</b>	NEMA 3R, IP54/55**
<b>Temperature</b>	min -40°F/max 140°F

\* DR30, 50 and 100 are 100kA; DR150 and 250 are 10kA  
Testing was performed with RK1 current limiting fuses sized at at least 100% of the devices ampacity ratings.

\*\* IP54 rated when receptacle and plug are mated, when not mated receptacle alone is IP55 rated provided that the lid is latched closed.

## Current Interruption Listings

Model	Current Interruption Capabilities
DR30	Not for current interrupting
DR50	For current interrupting up to 250 VAC***
DR100	For current interrupting up to 600 VAC***
DR150	For current interrupting up to 250 VAC***
DR250	Not for current interrupting

\*\*\* Devices rated for current interrupting are not intended for repetitive switching duties.

## Listings

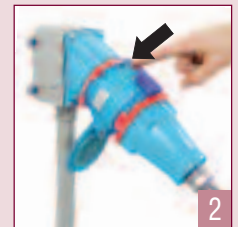
Category	UL	CSA	IEC
Plugs and Receptacles	UL 1682	C22.2 No. 182.1	60309-1

CE ratings available upon request

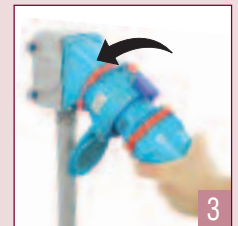
## Operating Instructions



When the plug and receptacle are latched together, the circuit is connected.



Pressing the pawl causes the DR to break the circuit. The plug is ejected to its rest position; its contacts are now dead.



Rotating the 'dead' plug 30° counterclockwise closes the safety shutter and frees the plug to be withdrawn from the receptacle.



The plug and the receptacle are separated. The safety shutter prevents access to live parts.

5 To reconnect, insert plug into receptacle, rotate 30° clockwise, and apply insertion force.



# DR – 30A Standard Duty Plugs & Receptacles

## Ratings

- Voltage**  
600 VAC, 250 VDC
- Current Interruption Capability**  
Not for current interrupting
- Short Circuit Rating**  
100kA  
Testing was performed with RK1 current limiting fuses sized at least 100% of the devices ampacity rating.
- Environmental Ratings**  
NEMA 3R, IP54/55\*  
\* IP54 when the plug & receptacle are mated. IP55 on the receptacle alone when the lid is latched closed.
- Temperature Range**  
Min -40°F/Max 140°F  
See pg 194 for temps below -15°F.
- Wiring Capacity\***  
Min 14 AWG Max 8 AWG  
Aux Contacts - Max 8 AWG  
\*Based on THHN wire sizes
- Listings**  
UL, CSA, IEC, CE\*  
\* Contact Customer Service

## Receptacle (female)



Don't forget to add installation accessories to your order

## Inlet (male)



Voltage	Polarity	Part # Poly
120/208V	3P+N+E	31-14237-K16
125V	1P+N+E	31-14175-K07
125/250V	2P+N+E	31-14176-K07
208V	2P+E	31-14232-K16
208V	3P+E	31-14233-K16
250V	2P+E	31-14172-K07
250V	3P+E	31-14173-K07
277V	1P+N+E	31-14245-K04
277/480V	3P+N+E	31-14247-K04
347/600V	3P+N+E	31-14187-K14
480V	2P+E	31-14242-K04
480V	3P+E	31-14243-K04
600V	2P+E	31-14182-K14
600V	3P+E	31-14183-K14

Voltage	Polarity	Part # Poly
120/208V	3P+N+E	31-18237-K16
125V	1P+N+E	31-18175-K07
125/250V	2P+N+E	31-18176-K07
208V	2P+E	31-18232-K16
208V	3P+E	31-18233-K16
250V	2P+E	31-18172-K07
250V	3P+E	31-18173-K07
277V	1P+N+E	31-18245-K04
277/480V	3P+N+E	31-18247-K04
347/600V	3P+N+E	31-18187-K14
480V	2P+E	31-18242-K04
480V	3P+E	31-18243-K04
600V	2P+E	31-18182-K14
600V	3P+E	31-18183-K14

Other voltage configurations are available – contact customer service at 800.433.7642.

## Main Options



Auxiliary Contacts



Emergency Stop Pawl



Padlock Pawl

## Receptacle Options

## Part #

With 2 Auxiliary/Pilot Contacts	Recept # - 972
LP Watertightness (low pressure)	Recept # - LP
HP Watertightness (high pressure)	Recept # - HP
Emergency Stop Pawl	Recept # - 375
Locking Mushroom Pawl	Recept # - 845
Padlock Pawl	Recept # - 843
Metal Pawl (on poly receptacle)	Recept # - 824
Closed Lid Configuration	Recept # - NC
With Auxiliary Switch	Recept # - 270

## Inlet Options

## Part #

With 2 Auxiliary/Pilot contacts	Inlet # - 972
LP Watertightness (low pressure)	Inlet # - LP
HP Watertightness (high pressure)	Inlet # - HP
With no lockout hole	Inlet # - A155
For Auxiliary Switch	Inlet # - NNF
With Spring-Loaded Cap	Inlet # - 226

### DR30 Order Example:

To order 2 auxiliary/pilot contacts on an inlet and receptacle add **-972** to the part numbers.

DR30 Inlet 3P+E = 31-18243-K04-**972**

DR30 Receptacle 3P+E = 31-14243-K04-**972**

Appropriate accessory part numbers must also be included on the order.

See pgs 171-180 for detailed information on these options

# Installation Accessories

## Handles



Not NEMA 3R

NPT	Poly Handle	Cable Range	Poly Handle w/Clamp & Bushing	Nylon Handle	Neoprene Handle
1/2"	1PH12	.20 - .83	-	FH111	-
3/4"	1PH34	.32 - .88	-	-	31-111
1"	1PH1	.750 - .875	1PM514	-	-
1 1/4"	1PH114	.875 - 1.000	1PM516	-	-
		1.000 - 1.125	1PM518	-	-
		1.125 - 1.250	1PM520	-	-
		1.250 - 1.375	1PM522	-	-

**Notes:** • Finger draw plates are recommended for easier connector closure on cord to cord assemblies.  
• For available cord grips, see pgs 167-168.

## Angles



Nylon 30° Angle	Metal 30° Angle	Metal Angle FS/FD Box 30°	Metal Straight Adapter
MP2	MA2	MAFS2	MS2

## NPT Guidelines

Cable Range	NPT
.062 - .5	1/2"
.187 - .75	3/4"
.437 - 1.10	1"
.750 - 1.375	1 1/4"

NPT sizes are determined by the cable diameter and third party cord grip.

## Junction Boxes



NPT	Metal Box	Metal Box with Nylon Angle	Poly* Conduit Entry
1/2"	MB312	31-1A053-080-12	MC212
3/4"	MB334	31-1A053-080-34	MC234
1"	MB31	31-1A053-080-1	-
1 1/4"	MB3114	31-1A053-080-114	-

\* For poly devices only

## Miscellaneous Accessories



\* Set of Two (2)

For Male Devices Only

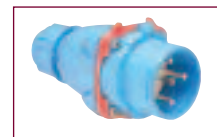
For Male Devices Only

Finger Drawplates	Protective Cap	Padlockable Cap Poly	Inlet Spring-loaded Cap
FDP2	31-1A126	DS1PC	31-1A226

\* Recommended for cord to cord assembly applications, for easier connector closure

## Order Example

A typical order should include an inlet part number, a receptacle part number **AND** the matching handles, angles or other required accessories.



Male Inlet with Handle (Plug)  
31-18243-K04 + FH111



Female Receptacle with Angle Adapter  
31-14243-K04 + MP2



# DR – 50A

## Standard Duty Plugs & Receptacles

### Ratings

- Voltage**  
600 VAC, 250 VDC
- Current Interruption Capability**  
For current interrupting up to 250 VAC
- Short Circuit Rating**  
100kA  
Testing was performed with RK1 current limiting fuses sized at least 100% of the devices ampacity rating.
- Environmental Ratings**  
NEMA 3R, IP54/55\*  
\* IP54 when the plug & receptacle are mated. IP55 on the receptacle alone when the lid is latched closed.
- Temperature Range**  
Min -40°F/Max 140°F  
See pg 194 for temps below -15°F.
- Wiring Capacity\***  
Min 12 AWG Max 4 AWG  
Aux Contacts - Max 12 AWG  
\* Based on THHN wire sizes
- Listings**  
UL, CSA, IEC, CE\*  
\* Contact Customer Service

### Receptacle (female)



Don't forget to add installation accessories to your order

### Inlet (male)



Voltage	Polarity	Part # Poly
120/208V	3P+N+E	31-34237-K16
125V	1P+N+E	31-34175-K07
125/250V	2P+N+E	31-34176-K07
208V	2P+E	31-34232-K16
208V	3P+E	31-34233-K16
250V	2P+E	31-34172-K07
250V	3P+E	31-34173-K07
277V	1P+N+E	31-34245-K04
277/480V	3P+N+E	31-34247-K04
347/600V	3P+N+E	31-34187-K14
480V	2P+E	31-34242-K04
480V	3P+E	31-34243-K04
600V	2P+E	31-34182-K14
600V	3P+E	31-34183-K14

Voltage	Polarity	Part # Poly
120/208V	3P+N+E	31-38237-K16
125V	1P+N+E	31-38175-K07
125/250V	2P+N+E	31-38176-K07
208V	2P+E	31-38232-K16
208V	3P+E	31-38233-K16
250V	2P+E	31-38172-K07
250V	3P+E	31-38173-K07
277V	1P+N+E	31-38245-K04
277/480V	3P+N+E	31-38247-K04
347/600V	3P+N+E	31-38187-K14
480V	2P+E	31-38242-K04
480V	3P+E	31-38243-K04
600V	2P+E	31-38182-K14
600V	3P+E	31-38183-K14

Other voltage configurations are available – contact customer service at 800.433.7642.

### Main Options



Auxiliary Contacts



Emergency Stop Pawl



Padlock Pawl

### Receptacle Options

### Part #

With 2 Auxiliary/Pilot Contacts	Recept # - 972
With 3 Auxiliary/Pilot Contacts	Recept # - 973
With 4 Auxiliary/Pilot Contacts	Recept # - 974
LP Watertightness (low pressure)	Recept # - LP
HP Watertightness (high pressure)	Recept # - HP
Emergency Stop Pawl	Recept # - 375
Locking Mushroom Pawl	Recept # - 845
Padlock Pawl	Recept # - 843
Metal Pawl (on poly receptacle)	Recept # - 824
Closed Lid Configuration	Recept # - NC
With Auxiliary Switch	Recept # - 270
Recess Plate	Recept # - 142

### Inlet Options

### Part #

With 2 Auxiliary/Pilot Contacts	Inlet # - 972
With 3 Auxiliary/Pilot Contacts	Inlet # - 973
With 4 Auxiliary/Pilot Contacts	Inlet # - 974
LP Watertightness (low pressure)	Inlet # - LP
HP Watertightness (high pressure)	Inlet # - HP
With No Lockout Hole	Inlet # - A155
For Auxiliary Switch	Inlet # - NNF
With Spring-Loaded Cap	Inlet # - 226

#### DR50 Order Example:

To order 2 auxiliary/pilot contacts on an inlet and receptacle add **-972** to the part numbers.

DR50 Inlet 3P+E = 31-38243-K04-**972**

DR50 Receptacle 3P+E = 31-34243-K04-**972**

Appropriate accessory part numbers must also be included on the order.

See pgs 171-180 for detailed information on these options

# Installation Accessories

## Handles



Not NEMA 3R

Makes connector closures easier

NPT	Poly Handle	Cable Range	Poly Handle w/Clamp & Bushing	Nylon Handle	Neoprene Handle	Poly Handle w/built in Draw Grip
1/2"	3PH12	.32 - 1.25	-	-	-	FH311-473
3/4"	3PH34	.38 - 1.12	-	-	31-311	-
1"	3PH1	.39 - 1.18	-	FH311	-	-
1 1/4"	3PH114	.750 - .875	3PM514	-	-	-
		.875 - 1.000	3PM516	-	-	-
		1.000 - 1.125	3PM518	-	-	-
		1.125 - 1.250	3PM520	-	-	-
		1.250 - 1.375	3PM522	-	-	-

**Notes:** • For available cord grips, see pgs 167-168.  
• For a guideline of NPT sizes based on cable ranges, see DR30 on pg 132.

## Angles



Nylon 30° Angle	Metal 30° Angle	Metal 70° Angle	Metal Angle FS/FD Box 30°	Metal Straight Adapter
MP3	MA3	89-3A027	MAFS3	MS3

## Junction Boxes



NPT	Metal Box	Metal Box with Nylon Angle	Poly* Conduit Entry
1/2"	MB312	31-3A053-080-12	-
3/4"	MB334	31-3A053-080-34	MC334
1"	MB31	31-3A053-080-1	MC31
1 1/4"	MB3114	31-3A053-080-114	-

\* For poly devices only

## Miscellaneous Accessories



\* Set of Two (2)



For Male Devices Only



For Male Devices Only



Finger Drawplates	Protective Cap	Padlockable Cap Poly	Inlet Spring-Loaded Cap
FDP3	31-3A126	DS3PC	31-3A226

## Accessory Spotlight

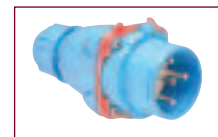
### Finger Drawplates



Finger drawplates are recommended for easier connector closure on cord to cord assemblies.

## Order Example

A typical order should include an inlet part number, a receptacle part number **AND** the matching handles, angles or other required accessories.



Male Inlet with Handle (Plug)  
31-38243-K04 + FH311



Female Receptacle with Angle Adapter  
31-34243-K04 + MP3



## DR – 100A Standard Duty Plugs & Receptacles

### Ratings

- Voltage**  
600 VAC, 250 VDC
- Current Interruption Capability**  
For current interrupting up to 600 VAC
- Short Circuit Rating**  
100kA  
Testing was performed with RK1 current limiting fuses sized at least 100% of the devices ampacity rating.
- Environmental Ratings**  
NEMA 3R, IP54/55\*  
\* IP54 when the plug & receptacle are mated. IP55 on the receptacle alone when the lid is latched closed.
- Temperature Range**  
Min -40°F/Max 140°F  
See pg 194 for temps below -15°F.
- Wiring Capacity\***  
Min 6 AWG Max 2 AWG  
Aux Contacts - Max 14 AWG  
\* Based on THHN wire sizes
- Listings**  
UL, CSA, IEC, CE\*  
\* Contact Customer Service

### Receptacle (female)



Don't forget to add installation accessories to your order

### Inlet (male)



Voltage	Polarity	Part #	
		Poly	Metal
120/208V	3P+N+E	31-64237-K16	39-64237-K16
125V	1P+N+E	31-64175-K07	39-64175-K07
125/250V	2P+N+E	31-64176-K07	39-64176-K07
208V	2P+E	31-64232-K16	39-64232-K16
208V	3P+E	31-64233-K16	39-64233-K16
250V	2P+E	31-64172-K07	39-64172-K07
250V	3P+E	31-64173-K07	39-64173-K07
277V	1P+N+E	31-64245-K04	39-64245-K04
277/480V	3P+N+E	31-64247-K04	39-64247-K04
347/600V	3P+N+E	31-64187-K14	39-64187-K14
480V	2P+E	31-64242-K04	39-64242-K04
480V	3P+E	31-64243-K04	39-64243-K04
600V	2P+E	31-64182-K14	39-64182-K14
600V	3P+E	31-64183-K14	39-64183-K14

Voltage	Polarity	Part #	
		Poly	Metal
120/208V	3P+N+E	31-68237-K16	39-68237-K16
125V	1P+N+E	31-68175-K07	39-68175-K07
125/250V	2P+N+E	31-68176-K07	39-68176-K07
208V	2P+E	31-68232-K16	39-68232-K16
208V	3P+E	31-68233-K16	39-68233-K16
250V	2P+E	31-68172-K07	39-68172-K07
250V	3P+E	31-68173-K07	39-68173-K07
277V	1P+N+E	31-68245-K04	39-68245-K04
277/480V	3P+N+E	31-68247-K04	39-68247-K04
347/600V	3P+N+E	31-68187-K14	39-68187-K14
480V	2P+E	31-68242-K04	39-68242-K04
480V	3P+E	31-68243-K04	39-68243-K04
600V	2P+E	31-68182-K14	39-68182-K14
600V	3P+E	31-68183-K14	39-68183-K14

Other voltage configurations are available – contact customer service at 800.433.7642.

### Main Options



**Auxiliary Contacts**



**Emergency Stop Pawl**



**Padlockable Mushroom Pawl**

### Receptacle Options

### Part #

With 2 Auxiliary/Pilot Contacts	Recept # - 972
With 3 Auxiliary/Pilot Contacts	Recept # - 263
LP Watertightness (low pressure)	Recept # - LP
HP Watertightness (high pressure)	Recept # - HP
Emergency Stop Pawl	Recept # - 375
Locking Mushroom Pawl	Recept # - 845
Padlockable Mushroom Pawl	Recept # - 843
Metal Pawl (on poly receptacle)	Recept # - 824
Closed Lid Configuration	Recept # - NC
With Auxiliary Switch	Recept # - 270
Recess Plate	Recept # - 142

### Inlet Options

### Part #

With 2 Auxiliary/Pilot Contacts	Inlet # - 972
With 3 Auxiliary/Pilot Contacts	Inlet # - 263
LP Watertightness (low pressure)	Inlet # - LP
HP Watertightness (high pressure)	Inlet # - HP
With No Lockout Hole	Inlet # - A155
For Auxiliary Switch	Inlet # - NNF
With Inlet Spring-Loaded Cap	Inlet # - 226

#### DR100 Order Example:

To order 2 auxiliary/pilot contacts on an inlet and receptacle add **-972** to the part numbers.

DR100 Inlet 3P+E = 31-68243-K04-**972**

DR100 Receptacle 3P+E = 31-64243-K04-**972**

Appropriate accessory part numbers must also be included on the order.

See pgs 171-180 for detailed information on these options

# Installation Accessories

Unless indicated otherwise, accessories can be used with either poly or metal plugs and receptacles

## Handles



Not NEMA 3R

Makes connector closures easier

NPT	Poly Handle	Metal* Handle	Cable Range	Poly Handle w/Clamp & Bushing	Nylon Handle	Neoprene Handle	Poly Handle w/built in Draw Grip
1/2"	6PH12	6H12	.50 - 1.25	-	-	31-611	-
3/4"	6PH34	6H34	.51 - 1.38	-	FH611	-	-
1"	6PH1	6H1	.55 - 1.53	-	-	-	FH611-473
1 1/4"	6PH114	6H114	1.250 - 1.375	6PM622	-	-	-
1 1/2"	6PH112	6H112	1.438 - 1.562	6PM625	-	-	-
			1.562 - 1.688	6PM627	-	-	-
			1.688 - 1.812	6PM629	-	-	-

**Notes:** • For available cord grips, see pgs 167-168.  
 • For a guideline of NPT sizes based on cable ranges, see DR250 on pgs 140.  
 \* For metal devices only

## Angles



Nylon 30° Angle	Metal 30° Angle	Metal 70° Angle	Metal Angle Oversized 30°	Metal Straight Adapter	Metal Lateral Angle 30°
MP6	MA6	89-6A027	MA660	MS6	MAB6

## Junction Boxes



NPT	Metal Box	Metal Box with Nylon Angle	Metal Box with Metal Angle	Poly* Conduit Entry
1/2"	-	-	-	MC612
3/4"	-	-	-	MC634
1"	MB61	31-6A053-080-1	39-6A053-080-1	MC61
1 1/4"	MB6114	31-6A053-080-114	39-6A053-080-114	MC6114
1 1/2"	MB6112	31-6A053-080-112	39-6A053-080-112	-
2"	MB62	31-6A053-080-2	39-6A053-080-2	-

\* For poly devices only

## Miscellaneous Accessories



\* Set of Two (2)

For Male Devices Only

For Male Devices Only

Finger Drawplates	Protective Cap	Padlockable Cap Aluminum	Inlet Spring-Loaded Cap
FDP6	31-6A126	DS6MC	31-6A226

## Accessory Spotlight

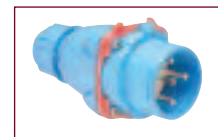
Finger Drawplates



Finger drawplates are recommended for easier connector closure on cord to cord assemblies.

## Order Example

A typical order should include an inlet part number, a receptacle part number **AND** the matching handles, angles or other required accessories.



Male Inlet with Handle (Plug)  
31-68243-K04 + FH611



Female Receptacle with Angle Adapter  
31-64243-K04 + MP6





## DR – 150A Standard Duty Plugs & Receptacles

### Ratings

- Voltage**  
600 VAC, 250 VDC
- Current Interruption Capability**  
For current interrupting up to 250 VAC
- Short Circuit Rating**  
10kA  
Testing was performed with RK1 current limiting fuses sized at least 100% of the devices ampacity rating.
- Environmental Ratings**  
NEMA 3R, IP54/55\*  
\*IP54 when the plug & receptacle are mated. IP55 on the receptacle alone when the lid is latched closed.
- Temperature Range**  
Min -40°F/Max 140°F  
See pg 194 for temps below -15°F.
- Wiring Capacity\***  
Min 4 AWG Max 2/0+ AWG  
Aux Contacts - Max 14 AWG  
\*Based on THHN wire sizes  
\* For 2/0 size, add suffix -E323 to inlet or receptacle part number.
- Listings**  
UL, CSA, IEC, CE\*  
\*Contact Customer Service

### Receptacle (female)



Don't forget to add installation accessories to your order

Standard DR150 lid opens to 90°

### Inlet (male)



Voltage	Polarity	Part #	
		Poly	Metal
120/208V	3P+N+E	31-94237-K16	39-94237-K16
125V	1P+N+E	31-94175-K07	39-94175-K07
125/250V	2P+N+E	31-94176-K07	39-94176-K07
208V	2P+E	31-94232-K16	39-94232-K16
208V	3P+E	31-94233-K16	39-94233-K16
250V	2P+E	31-94172-K07	39-94172-K07
250V	3P+E	31-94173-K07	39-94173-K07
277V	1P+N+E	31-94245-K04	39-94245-K04
277/480V	3P+N+E	31-94247-K04	39-94247-K04
347/600V	3P+N+E	31-94187-K14	39-94187-K14
480V	2P+E	31-94242-K04	39-94242-K04
480V	3P+E	31-94243-K04	39-94243-K04
600V	2P+E	31-94182-K14	39-94182-K14
600V	3P+E	31-94183-K14	39-94183-K14

Voltage	Polarity	Part #	
		Poly	Metal
120/208V	3P+N+E	31-98237-K16	39-98237-K16
125V	1P+N+E	31-98175-K07	39-98175-K07
125/250V	2P+N+E	31-98176-K07	39-98176-K07
208V	2P+E	31-98232-K16	39-98232-K16
208V	3P+E	31-98233-K16	39-98233-K16
250V	2P+E	31-98172-K07	39-98172-K07
250V	3P+E	31-98173-K07	39-98173-K07
277V	1P+N+E	31-98245-K04	39-98245-K04
277/480V	3P+N+E	31-98247-K04	39-98247-K04
347/600V	3P+N+E	31-98187-K14	39-98187-K14
480V	2P+E	31-98242-K04	39-98242-K04
480V	3P+E	31-98243-K04	39-98243-K04
600V	2P+E	31-98182-K14	39-98182-K14
600V	3P+E	31-98183-K14	39-98183-K14

Other voltage configurations are available – contact customer service at 800.433.7642.

### Main Options



Auxiliary Contacts



Emergency Stop Pawl



Padlockable Mushroom Pawl

### Receptacle Options

### Part #

With 2 Auxiliary/Pilot contacts	Recept # - 172
With 3 Auxiliary/Pilot contacts	Recept # - 173+
With 4 Auxiliary/Pilot contacts	Recept # - 174+
With 5 Auxiliary/Pilot contacts	Recept # - 175+
LP Watertightness (low pressure)	Recept # - LP
HP Watertightness (high pressure)	Recept # - HP
Emergency Stop Pawl	Recept # - 375
Locking Mushroom Pawl	Recept # - 845
Padlockable Mushroom Pawl	Recept # - 843
Metal Pawl (on poly receptacle)	Recept # - 824
180° Opening Lid	Recept # - 180
Closed Lid configuration	Recept # - NC
With Auxiliary Switch	Recept # - 270

### Inlet Options

### Part #

With 2 Auxiliary/Pilot contacts	Inlet # - 172
With 3 Auxiliary/Pilot contacts	Inlet # - 173+
With 4 Auxiliary/Pilot contacts	Inlet # - 174+
With 5 Auxiliary/Pilot contacts	Inlet # - 175+
LP Watertightness (low pressure)	Inlet # - LP
HP Watertightness (high pressure)	Inlet # - HP
With No Lockout Hole	Inlet # - A155
For Auxiliary Switch	Inlet # - NNF

#### DR150 Order Example:

To order 2 auxiliary contacts on an inlet and receptacle add **-972** to the part numbers.

DR150 Inlet 3P+E = 31-98243-K04-**172**

DR150 Receptacle 3P+E = 31-94243-K04-**172**

Appropriate accessory part numbers must also be included on the order.

See pgs 171-180 for detailed information on these options

Notes: + DR150 devices with 3 or more auxiliary/pilot contacts are not UL/CSA listed

# Installation Accessories

Unless indicated otherwise, accessories can be used with either poly or metal plugs and receptacles

## Handles



IP 66/67

NPT	Poly Handle	Metal* Handle
3/4"	9PH34	9H34
1"	9PH1	9H1
1 1/4"	9PH114	9H114
1 1/2"	9PH112	9H112
2"	9PH2	9H2

Cable Range	Poly Handle w/Clamp & Bushing	Santoprene™ Handle
.70 - 1.00	–	65-9A013-D25
1.00 - 1.375	–	65-9A013-D35
1.250 - 1.375	9PM622	–
1.375 - 1.750	–	65-9A013-D45
1.438 - 1.562	9PM625	–
1.562 - 1.688	9PM627	–
1.688 - 1.812	9PM629	–

**Notes:** • Finger draw plates are recommended for easier connector closure on cord to cord assemblies.  
 • For available cord grips, see pgs 167-168.  
 \* For metal devices only

• For a guideline of NPT sizes based on cable ranges, see DR250 on pg 140.

## Angles



Nylon 30° Angle	Metal 30° Angle	Metal 70° Angle	Metal Angle Oversized 30°	Metal Straight Adapter
MP10	MA10	89-9A027	MA110	MS10

## Junction Boxes



NPT	Metal Box	Metal Box with Nylon Angle	Metal Box with Metal Angle
1 1/4"	MB10114	31-9A053-080-114	39-9A053-080-114
1 1/2"	MB10112	31-9A053-080-112	39-9A053-080-112
2"	MB102	31-9A053-080-2	39-9A053-080-2
2 1/2"	MB20212	31-9A053-080-212	39-9A053-080-212

## Miscellaneous Accessories



Removable Draw Bar Complete Kit *	1 Draw Bar	1 Plate	Permanently Attached Complete Kit **	1 Draw Bar 1 Attached Plate	1 Plate
NT100	NT110	NT120	39-9A486	39-9A024-486	39-9A014-486

\* Consists of 1 Draw Bar and 2 Plates

\*\* Consists of 1 Draw Bar with Attached Plate and 1 additional Plate



\* Set of Two (2)

For Male Devices Only

For Male Devices Only

Finger Drawplates	Protective Cap	Padlockable Cap Aluminum	Cord Grip with Mesh
FDP9SS	31-9A126	DS9MC	see pgs 167-168

\* Recommended for cord to cord assembly applications, for easier connector closure

## Order Example

A typical order should include an inlet part number, a receptacle part number **AND** the matching handles, angles or other required accessories.



Male Inlet with Handle (Plug)  
39-98243-K04 + 31-911



Female Receptacle with Angle Adapter  
39-94243-K04 + MA10



## DR – 250A Standard Duty Plugs & Receptacles

### Ratings

- Voltage**  
600 VAC, 250 VDC
- Current Interruption Capability**  
Not for current interrupting
- Short Circuit Rating**  
10kA  
Testing was performed with RK1 current limiting fuses sized at least 100% of the devices ampacity rating.
- Environmental Ratings**  
NEMA 3R, IP54/55\*  
\* IP54 when the plug & receptacle are mated. IP55 on the receptacle alone when the lid is latched closed.
- Temperature Range**  
Min -40°F/Max 140°F  
See pg 194 for temps below -15°F.
- Wiring Capacity\***  
Min 4 AWG Max 4/0+ AWG  
Aux Contacts - Max 14 AWG  
\* Based on THHN wire sizes  
\* For 4/0 size, add suffix -A06 to inlet or receptacle part number.
- Listings**  
UL, IEC, CE\*  
\* Contact Customer Service

### Receptacle (female)



Standard DR250 lid opens to 90°



Don't forget to add installation accessories to your order

### Inlet (male)



Voltage	Polarity	Part # Metal
120/208V	3P+N+E	39-24237-K16
125V	1P+N+E	39-24035-K07
125/250V	2P+N+E	39-24036-K07
208V	2P+E	39-24232-K16
208V	3P+E	39-24233-K16
250V	2P+E	39-24032-K07
250V	3P+E	39-24033-K07
277V	1P+N+E	39-24245-K04
277/480V	3P+N+E	39-24247-K04
347/600V	3P+N+E	39-24027-K14
480V	2P+E	39-24242-K04
480V	3P+E	39-24243-K04
600V	2P+E	39-24022-K14
600V	3P+E	39-24023-K14

Voltage	Polarity	Part # Metal
120/208V	3P+N+E	39-28237-K16
125V	1P+N+E	39-28035-K07
125/250V	2P+N+E	39-28036-K07
208V	2P+E	39-28232-K16
208V	3P+E	39-28233-K16
250V	2P+E	39-28032-K07
250V	3P+E	39-28033-K07
277V	1P+N+E	39-28245-K04
277/480V	3P+N+E	39-28247-K04
347/600V	3P+N+E	39-28027-K14
480V	2P+E	39-28242-K04
480V	3P+E	39-28243-K04
600V	2P+E	39-28022-K14
600V	3P+E	39-28023-K14

Other voltage configurations are available – contact customer service at 800.433.7642.

### Main Options



**Auxiliary Contacts**



**Emergency Stop Pawl**



**Padlockable Mushroom Pawl**

### Receptacle Options

### Part #

With 2 Auxiliary/Pilot Contacts	Recept # - 172
With 3 Auxiliary/Pilot Contacts	Recept # - 173+
With 4 Auxiliary/Pilot Contacts	Recept # - 174+
With 5 Auxiliary/Pilot Contacts	Recept # - 175+
LP Watertightness (low pressure)	Recept # - LP
HP Watertightness (high pressure)	Recept # - HP
Emergency Stop Pawl	Recept # - 375
Locking Mushroom Pawl	Recept # - 845
Padlockable Mushroom Pawl	Recept # - 843
Metal Pawl (on poly receptacle)	Recept # - 824
180° Opening Lid	Recept # - 180
Closed Lid Configuration	Recept # - NC
With Auxiliary Switch	Recept # - 270

### Inlet Options

### Part #

With 2 Auxiliary/Pilot Contacts	Inlet # - 172
With 3 Auxiliary/Pilot Contacts	Inlet # - 173+
With 4 Auxiliary/Pilot Contacts	Inlet # - 174+
With 5 Auxiliary/Pilot Contacts	Inlet # - 175+
LP Watertightness (low pressure)	Inlet # - LP
HP Watertightness (high pressure)	Inlet # - HP
With No Lockout Hole	Inlet # - A155
For Auxiliary Switch	Inlet # - NNF

#### DR250 Order Example:

To order 2 auxiliary/pilot contacts on an inlet and receptacle add **-172** to the part numbers.

DR250 Inlet 3P+E = 39-28243-K04-**172**

DR250 Receptacle 3P+E = 39-24243-K04-**172**

Appropriate accessory part numbers must also be included on the order.

See pgs 171-180 for detailed information on these options

**Notes:** + DR250 devices with 3 or more auxiliary/pilot contacts are not UL/CSA listed

# Installation Accessories

## Handles



Not NEMA 3R

NPT	Poly Handle	Metal* Handle
1"	-	2H1
1 1/4"	-	2H114
1 1/2"	2PH112	2H112
2"	2PH2	2H2
2 1/2"	2PH212	2H212

Cable Range	Neoprene Handle
1.50 - 2.25	31-211

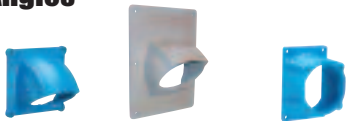
- Notes:**
- Finger draw plates are recommended for easier connector closure on cord to cord assemblies.
  - For available cord grips, see pgs 167-168.
  - \* For metal devices only

## NPT Guidelines

Cable Range	NPT
.062 - .5	1/2"
.187 - .75	3/4"
.437 - 1.10	1"
.750 - 1.375	1 1/4"
.890 - 1.650	1 1/2"
1.125 - 2.438	2"
1.750 - 2.565	2 1/2"

NPT sizes are determined by the cable diameter and third party cord grip.

## Angles



Metal 60° Angle	Metal Angle Oversized 45°	Metal Straight Adapter
MA20	MA220	MS20

## Junction Boxes



NPT	Metal Box	Metal Box with Metal Angle
1 1/2"	MB20112	39-2A053-080-112
2"	MB202	39-2A053-080-2
2 1/2"	MB20212	39-2A053-080-212
Oversized	MB22212	-

## Miscellaneous Accessories



Removable Draw Bar Complete Kit *	1 Draw Bar	1 Plate	Permanently Attached Complete Kit **	1 Draw Bar 1 Attached Plate	1 Plate
NT200	NT210	NT220	39-2A486	39-2A024-486	39-2A014-486

\* Consists of 1 Draw Bar and 2 Plates

\*\* Consists of 1 Draw Bar with Attached Plate and 1 additional Plate



For Male Devices Only



For Male Devices Only



Protective Cap	Padlockable Cap Aluminum	Cord Grip with Mesh
31-2A126	DS2MC	see pgs 167-168

## Order Example

A typical order should include an inlet part number, a receptacle part number **AND** the matching handles, angles or other required accessories.



Male Inlet with Handle (Plug)  
39-28247-K04 + 31-211



Female Receptacle with Angle Adapter  
39-24247-K04 + MA20